

NW CHILDREN'S FUND

Making hope work.

Realizing Hope: Help for High-Risk Youth

Helping high-risk youth is central to NW Children's Fund's mission. It's our last chance to end the cycle of child abuse and neglect before these kids reach adulthood and become parents themselves. It's no easy task. Getting through to a troubled teen during the precarious time between childhood and adulthood takes exceptional persistence, patience and understanding. Several NW agencies are making impressive inroads—working tirelessly to help teens look at the bigger picture and make choices that may be hard now, but come with a promise of a brighter future.

At the NWCF 2011 Forum, three agencies that serve the fragile youth population—**SafeFutures**, **Powerful Voices**, and **Atlantic Street Center**—painted vivid pictures of the serious pressures today's youth are facing. Neighborhoods where gang recruitment is nearly unavoidable, growing tensions between immigrant populations, prostitution and trafficking of girls associated with gangs, dropping out of school, homelessness—these are the harsh realities that our high-risk youth are struggling to avoid.

At **SafeFutures**, teen advocates stay in tune with the complex immigrant issues that fuel gang violence, and provide safe alternatives to help teens resist gang recruitment. **Powerful Voices** is reaching out to adolescent girls in public schools and detention centers, helping them transcend harmful conditions and become self advocates, critical thinkers and, ultimately, strong women. **Atlantic Street Center**, a 100+ year-old Seattle institution, is providing critical mentoring

and support so that kids are able to tap into their innate resiliency, and make decisions that will keep them off the streets and away from gang life.

Each of these remarkable organizations is finding new ways to steer young lives toward a safer, happier tomorrow. It's our last chance to make sure these teens don't grow up to replicate the abuse and neglect they endured. It's imperative that we make the most of it.

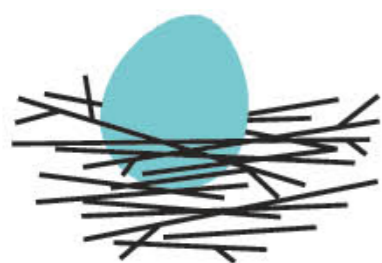


Pregnant, homeless, and a high-school dropout at 15, a scared Simani sought help from Atlantic Street Center. Now 2½ years later, Simani has earned her GED, and is determined to give her beautiful daughter the kind of love and support she received from her caseworker and mentor at ASC.

Photo by Shuichi Ito

NW
CF

SPRING 2011



NW
CHILDREN'S
FUND

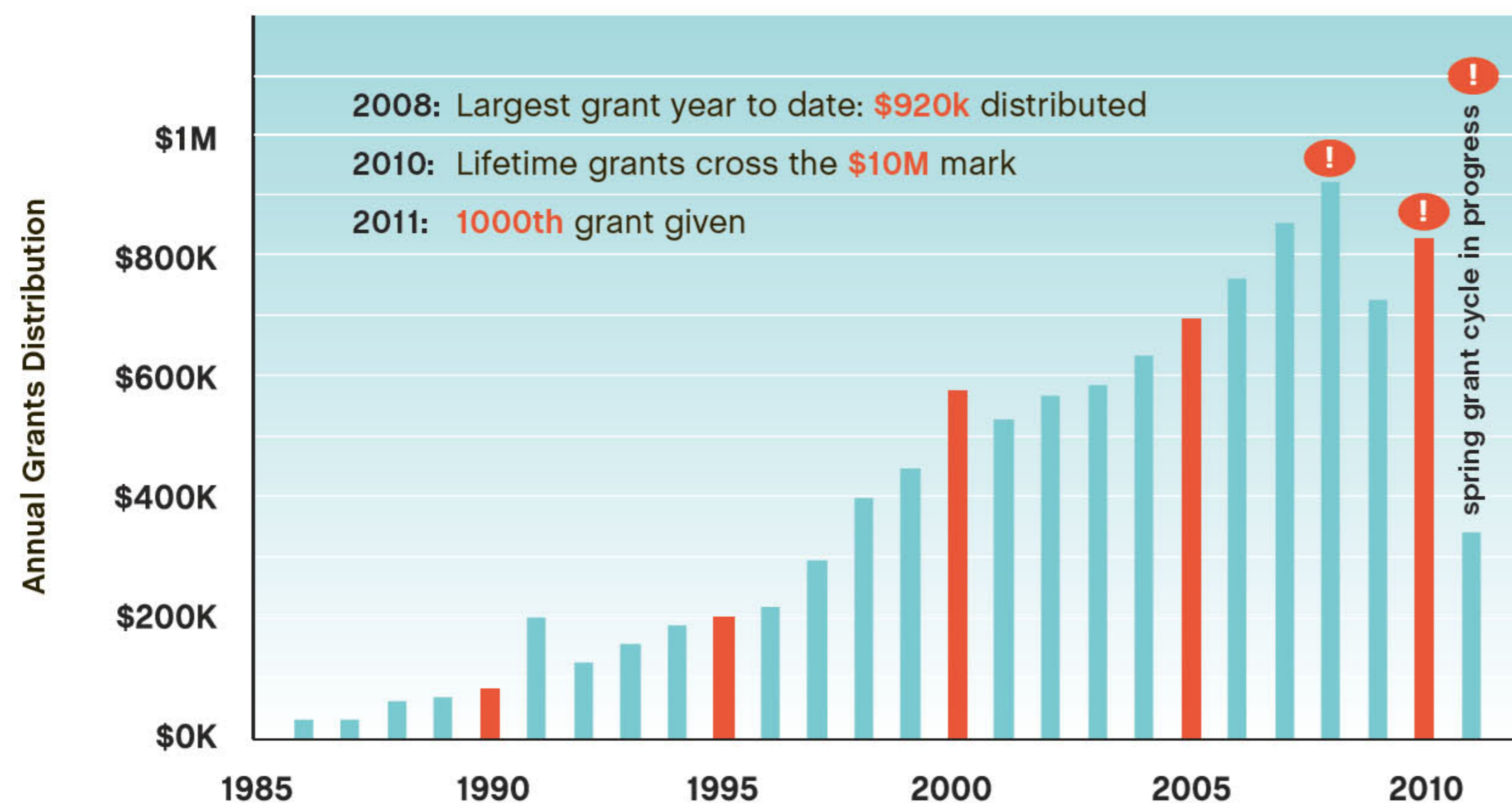
Making hope work.

One Thousand Grants Made. Countless Lives Changed.

Last June, the NW Children's Fund donor community surpassed the \$10-million mark in lifetime dollars invested. With this February's grant distribution, NW Children's Fund donors reached another impressive milestone: Since we began 26 years ago, we've provided 1000 grants to effective programs working to end the cycle of child abuse and neglect.

On behalf of each of the hundreds of thousands of children whose lives you have changed: *Thank you for caring—and for making hope work.*

NW Children's Fund Grantmaking Milestones



2011 NW Children's Fund Golf Classic

Presented by F5 Networks
 Friday, September 16, 2011
 The Golf Club
 at Redmond Ridge

MARK YOUR CALENDAR!

Join us for a terrific afternoon of golf benefiting our community's most vulnerable children. To participate or become a corporate sponsor, contact Jeff Christianson at 206-272-6462 or the NW Children's Fund office.

NW
CHILDREN'S
FUND

2100 24th Ave. S.
 Suite No. 320
 Seattle, WA 98144

T 206 682 8447
 F 206 682 8173
 nwc.org

Executive Director
 Victoria Peattie Helm

Co-Presidents
 Nicole Mortati Chang
 Yenii Chen Dex

Vice President
 Patricia Lee Smith

Treasurer
 Lori Leff Mueller

Secretary
 Lisa Kjaer-Schade

Board Members
 Charles Billington
 Diane Bowlin
 Sandy Cocanour
 Debra D. Dahlen
 Jane Davis
 Jim Deboo
 Monica Fix
 Robert Fries
 Alicia Hall Gold
 Randi Hedin
 Lisa Jelic
 Julie Jorgensen
 Rob Maguire
 Mary Fellows Nelson
 John Poli
 Michelle Raymond
 Valerie Robinson
 Scot Rogers
 Wenona S. Strafford
 Lynn Thorburn
 Barbara Turner
 Heidi Vanderlaan

Chair, Advisory Council
 Mary Ketcham Kerr

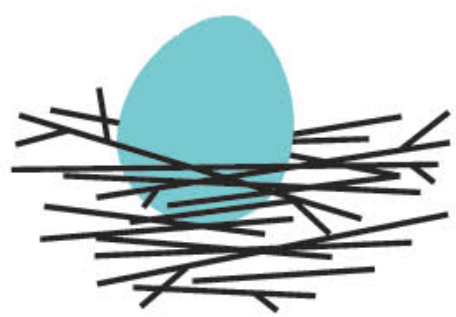
Tax ID 91-1314318

NW CHILDREN'S FUND

Winter 2011 Grant Recipients

Agency / Program Description	Grant (\$)	Agency / Program Description	Grant (\$)
Healing Abused Children		Strengthening Fragile Families	
Bethany Christian Services / Post-adoption counseling and support services to adoptive children and families.	4,800	Cocoon House: Project SAFE / Family-focused teen homelessness prevention program in Snohomish County.	9,000
HopeSparks: Healing Hearts Program / Individual counseling and group therapy for the youngest victims of physical and sexual abuse.	7,200	Domestic Abuse Women's Network / Services for women and children who have experienced domestic violence.	30,000
Kindering Center: CHERISH (CHildren Encouraged by Relationships In Secure Homes) / Program to address the social, emotional and other developmental issues of the most at-risk children in foster and kinship care.	12,000	Domestic Violence Services of Snohomish County / Shelter, case management and integrated support for victims of domestic abuse and their children in Snohomish County.	4,600
The Mockingbird Society / Foster care system development through youth leadership, legislative advocacy, and extended-family model for foster care.	30,000	Exodus Housing / Transitional housing, case management, and therapeutic recovery education to families impacted by domestic violence.	8,000
Northwest Immigrant Rights Project: Immigrant Child Advocacy Project / Critical legal services and advocacy for abused, abandoned, and undocumented immigrant children.	14,000	First Place / Pre-K through 6th-grade education and family support for children who are vulnerable due to crisis or homelessness.	9,500
Olive Crest: Foster Family Program / Recruitment, training and licensing of foster families for children traumatized by abuse and/or neglect.	12,000	Housing Hope: Child Development Program / Therapeutic programming to help homeless and at-risk families overcome barriers to age-appropriate development for their children.	12,000
YWCA Seattle King Snohomish / Expansion of existing therapeutic curriculum for children exposed to domestic violence, to address the needs of younger children.	7,200	KITH (Kirkland Interfaith Transitions in Housing) / Transitional housing, support and case management for homeless families in crisis.	5,000
Helping At-Risk Youth		Lydia Place / Housing and support services for women and their children in the transition from homelessness to independence.	4,600
Big Brothers Big Sisters of Island County / Mentoring services for low-income, high-risk teen and pre-teen girls in Island County.	9,000	Mary Bridge Children's Hospital & Health Center: Parenting Partnership / Intensive therapeutic home-visiting and group interventions to increase protective factors in families raising medically fragile infants under socially vulnerable conditions.	14,000
Boys & Girls Clubs of Whatcom County / Mentoring and education programs and services for youth living in Whatcom County and Lummi Island.	8,000	Parent Trust for Washington Children / Support and education services for at-risk families through every stage of a child's life.	30,000
Communities in Schools of Lakewood / After-school mentoring, tutoring and emergency services for underprivileged children provided through a network of volunteers and community organizations.	9,400	Readiness to Learn Foundation: Families in Transition Program / Integrated support and a form of case management for homeless families through community- and school-based programs.	9,000
Communities in Schools of Orting / School-based mentoring, enrichment, and outreach programs for youth at high risk of school failure in Orting.	9,400	Seattle Children's Home / Programs helping children and families learn to manage mental health and recovery.	10,000
El Centro de la Raza: Youth Violence Prevention Program / Culturally competent support services for at-risk Latino youth to increase academic achievement and reduce criminal involvement.	5,000	Vision House / Transitional housing and integrated support services for homeless mothers and their children.	10,500
New Horizons Ministries: Continuum of Care Program / An array of supportive services for Seattle's homeless youth.	6,400	Wellspring Family Services / Intensive, therapeutic case management services for homeless families.	10,500
Northwest Youth Services / Emergency shelter, transitional and long-term housing and support services for homeless youth in Skagit County.	11,000		
University District Youth Center (CCS) / Critical services for homeless, at-risk, runaway and/or street-involved youth ages 13-22.	5,000		
Youth Tutoring Program (CCS) / After-school tutoring and enrichment program for kids living in five Seattle low-income public housing communities.	10,000		
YouthCare: Emergency Shelter & Transitional Living Programs / Shelter, case management, referrals for services, crisis resolution and family reconciliation as appropriate for homeless adolescents.	13,000		

\$340,100
AWARDED



NW
CHILDREN'S
FUND

Making hope work.

2100 24th Ave. S.
Suite No. 320
Seattle, WA 98144

2011 Gala & Auction

Still need tickets?
RSVP early & save.

Non-Profit Org.
U.S. Postage
PAID
Seattle, WA
Permit No. 2135

UP!

NW CHILDREN'S FUND
2011 ANNUAL

GALA

PRESENTED BY
CHEF JOHN HOWIE

MAY 7, 2011



FESTIVITIES BEGIN AT 5:30 AT FREMONT STUDIOS

SILENT AND LIVE AUCTIONS • WINE TASTING • DINNER
BY CHEF JOHN HOWIE • DANCING TO LARRY 2.0

RSVP BY **APRIL 6** AND ENJOY SPECIAL SAVINGS!

For tickets and an auction catalog preview,
visit nwcf.maestroweb.com or call **206.682.8447**.
Tickets available through April 22.

GALA SPONSORS

BENEFACTORS

The Boeing Company
Columbia Bank

LEADERS

Davis Wright Tremaine LLP
FlyingSpot Entertainment
KPMG
Runde & Co. LLC

CORPORATE TABLE SPONSOR

MSSB Pacific Wealth
Management Group

PREMIER WINE SPONSORS

Fidélitas Wines
Hestia Cellars
Northwest Totem Cellars
Reininger Winery

PRINT DONATION

Compact Information Systems

DESIGN DONATION

Wunderman