

NW CHILDREN'S FUND

Making hope work.

High-Impact Grantmaking: The Power of Collaboration

Each year, NW Children's Fund Board Members explore the latest research surrounding child welfare and prepare for the upcoming grant-review cycle. This year, the Board invited 10 child welfare experts to lend new research and insights to the discussion. Several of these experts also participated as panelists at our annual fall retreat. The result was an invigorating exchange of ideas that confirmed NWCF's strategic approach, and sparked ideas for fine-tuning our grant-making processes to fit the ever-evolving needs of fragile children and families in our area.

Here are highlights in our three grantmaking areas:

Healing Abused Children: *The goal of these grants is to help young victims of abuse and neglect heal from early childhood traumatic experiences and find permanency and stability in their lives.*

According to research cited by Randy Hart of the Children's Administration, the long-term economic downturn has led to a discouraging uptick in cases of serious abuse of very young children, ages 0-3. Other panelists confirmed that stressors

associated with increased poverty, homelessness and mental health issues are key risk factors for child abuse and neglect.

In this grantmaking area, NWCF prioritizes programs that provide counseling and therapy, foster care programming, adoption services, and comprehensive support services. We will focus on comprehensive services aimed at long-term benefits--programs that not only treat, but prevent victims of abuse from growing up to become another generation of abusers.

Strengthening Fragile Families: *Grants in this category seek to prevent child abuse and neglect in at-risk families, and support healing and stability for families affected by domestic violence.*

In order to support families at greatest risk of child maltreatment, NWCF prioritizes programs aimed at building families' "protective factors" (see box on page two) – parent education and training, support groups for caregivers, family centers, supportive housing programs, emergency shelters, counseling, and other support services.



NW
CF

FALL 2013 Annual Report



Making hope work.

This year, panelists and Board members discussed exciting opportunities for enhanced collaboration and early coordination of support that are being incorporated into the child welfare landscape. If implemented effectively, these changes offer the possibility of redirecting at-risk children and families before they become more entrenched in damaging behaviors.

Helping At-Risk Youth:

Investments in these programs aim to promote healthy mental and physical maturity in at-risk youth so they can make good life decisions and break the generational cycle of abuse and poverty.

When reviewing grants, NWCF Board members look for programs that instill youth with necessary developmental assets* to grow into strong, responsible adults, and prioritize those that offer support for youth aging out of

foster care, tutoring and mentoring, youth engagement programs, and programs for homeless youth. At our retreat, panelists and Board members specifically discussed programs for teenagers. To be effective, programs for teens must combine strong adult mentoring and role modeling with a framework of peer group support, and be sensitive to the teenager's unique communication and learning styles. We are also extremely cognizant of how often this group overlaps with, or will soon become, young parents who will need support in order to parent effectively.

NWCF would like to thank the thought leaders, listed at right, who collaborated with us in this research and review process. Their insights and expertise will be invaluable as we embark on our next grant-review cycle.

* Learn more at www.search-institute.org/research/developmental-assets

A special thank you

- **Randy Hart**, Deputy Assistant Secretary, *Children's Administration*
- **Erinn Havig**, Program Manager, *Strengthening Families Washington*
- **Judy King**, Administrator, *Strengthening Families Washington*
- **Laurie Lippold**, Public Policy Director, *Partners for Our Children*
- **Jenni Olmstead**, Community Outreach & Engagement Manager, *Strengthening Families Washington*
- **Teresa Rafael**, Executive Director, *National Alliance of Children's Trust and Prevention Funds*
- **Toni Sebastian**, Practice Consultant, *DSHS Vulnerable Families Partnership*
- **Joan Sharp**, Project Manager, *National Child Abuse and Neglect Training & Publication Project*
- **Jennifer Teunon**, Principal, *Luma Consulting*
- **Dee Wilson**, Director of Child Welfare Services, Knowledge Management, *Casey Family Programs*

It's a fact: Five protective factors help families thrive.

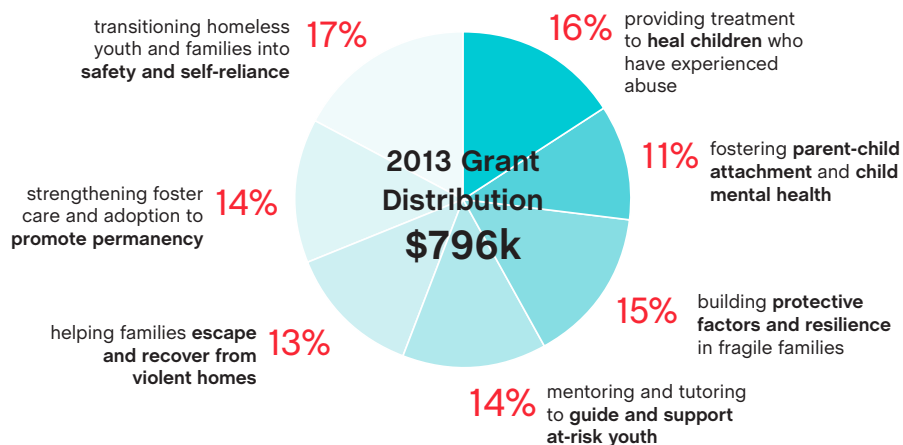
In Washington State, and all over the U.S., there is a renewed energy around services and programs that help families build the strength to weather challenges in a healthy, productive way. Research shows that when these five protective factors are well established in a family, the likelihood of child abuse and neglect diminishes, and the opportunity for optimal child and youth development increases.

Five Protective Factors for Strengthening Families

- Parental Resilience
- Social Connections
- Concrete Support in Times of Need
- Knowledge of Parenting & Child Development
- Social & Emotional Competence of Children

Learn more about the protective factors framework at www.del.wa.gov/development/strengthening/

Our Grantmaking Impact in 2013



100% of individual donors' gifts went directly to grants.



Holiday Vintage Show & Bazaar

benefiting NW Children's Fund

Saturday, November 16 • Noon-3pm

Tam O'Shanter Golf & Country Club
1313 183rd Avenue NE • Bellevue, WA 98008

NW CHILDREN'S FUND

2100 24th Ave. S.
Suite No. 320
Seattle, WA 98144

T 206 682 8447
F 206 682 8173
nwcf.org

Executive Director
Victoria Peattie Helm

President
Valerie Robinson

President Elect
Sandy Cocanour

Co-Treasurers
Cathy Hofferber
Sidney May

Secretary
M. Monica Fix

Board Members
Diane Bowlin
Lyndsay Castiglia
Nicole Mortati Chang
Melissa Canfield
Chasan
Kathryn Crandell
Debra D. Dahlen
Jane Davis
Paula Deboo
Yenii Chen Dex
Robert Fries
Chitra Gopalakrishnan
Lisa Jelic
Erin Medved
Michelle Raymond
Kim Reneris
Stephanie Robinett
JK Schatzman
Jeannine Sielinski
Wenona S. Strafford
Jackie Valentine
Heidi Vanderlaan

**Chair - Advisory
Council**
Mary Ketcham Kerr

Tax ID 91-1314318

Admission: **\$40**

RSVP today!

Space is limited!

Visit nwcf.org for tickets or to learn more.

*Includes fashion show, fabulous vintage shopping,
a light luncheon buffet, raffle ticket, and loads of fun!*

Saturday, April 26, 2014

Hope Springs

**NW Children's Fund
Gala & Auction**

Dinner by Chef John Howie
With Auctioneer John Curley

Save the date!

It's never too early to start getting excited for NW Children's Fund's Gala & Auction to be held at Fremont Studios. We've already started to procure auction items for the big event, so if you have something fantastic you'd like to contribute, be sure to let us know. Also, for information on how to be an event sponsor or table captain, call (206) 682-8447.

Be a part of the NWCF team!

NW Children's Fund is accepting applications for Board membership and other volunteer positions. To learn more, check out nwcf.org and then email cbeard@nwcf.org with your contact information.



NW CHILDREN'S FUND

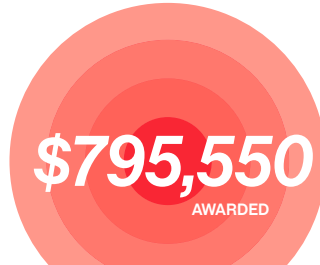
2013 Grant Recipients

Agency / Program Description	Grant (\$)	Agency / Program Description	Grant (\$)
Healing Abused Children		Helping At-Risk Youth	
Amara: Foster-Adoption Program / Parenting and adoption services to create safety and permanence for at-risk and special-needs children.	14,500	Big Brothers Big Sisters of Island County / Mentoring for low-income, high-risk, and pre-teen girls in Island County.	7,500
Childhaven / Crisis nursery and therapeutic childcare for abused, neglected and/or drug-affected children.	20,000	Big Brothers Big Sisters of Southwest Washington / One-on-one, professionally supported mentoring for at-risk youth in SW Washington, including foster youth and Native American populations.	7,100
Families Like Ours: Foster and Adoptive Family Education Programs / Education and support for non-traditional families, both pre- and post-foster care and adoption.	15,000	Cocoon House / Outreach, prevention, residential services and advocacy for homeless and highly disconnected youth.	20,000
Family Law CASA / Representation and advocacy for children in custody cases involving allegations of abuse and neglect.	15,000	Communities in Schools of Lakewood / Mentoring, tutoring, and emergency services for underprivileged children provided through a network of community volunteers.	12,500
Jumping Mouse Children's Center / Long-term, intensive play therapy and social advocacy for neglected and abused children.	14,600	Communities in Schools of Orting / School-based mentoring, enrichment, and outreach program for youth at high risk of school failure in Orting.	10,000
Kindering Center: Children Encouraged by Relationships In Secure Homes (CHERISH) / Program to address the social, emotional, and other developmental issues of the most at-risk children in foster and kinship care.	14,550	FareStart: Barista Training & Education Program / Comprehensive job training and support services for homeless and at-risk youth.	7,100
King County Sexual Assault Resource Center: Dando Voz Program / Support services for Spanish-speaking children and families in South King County who have suffered from sexual assault or child abuse.	7,600	New Futures: Afterschool and Youth Development Programs / Provides year-round tutoring and support services for at-risk youth in the Highline School District.	14,325
Lutheran Community Services Northwest: Permanency Planning Foster Care Program / Permanency planning and case management for foster children and their families.	13,000	Northwest Youth Services: Positive Adolescent Development Program / Emergency housing and case management for homeless youth ages 13-17.	14,500
Navos: Early Childhood Mental Health Program / Early intervention for children with emotional/mental health issues, and intensive services to help children and parents/caregivers develop secure attachments.	14,300	Peace For the Streets by Kids from the Streets: Risk Learning Center Program / Year-round alternative education environment designed to empower youth.	5,000
Northwest Adoption Exchange: In Their Own Voice Video Project / Program to help find permanent families for foster children who face significant barriers to adoption.	8,000	ROOTS / Provides a shelter and continuum of care for homeless youth ages 18-25 in the University District of Seattle.	5,000
Northwest Immigrant Rights Project: Immigrant Child Advocacy Project / Legal services and advocacy for abused, abandoned, and undocumented immigrant children.	15,000	SafeFutures Youth Center / Comprehensive services for youth development and violence prevention.	30,000
Pediatric Interim Care Center / Intensive, specialized care for drug-exposed newborn infants.	14,200	Seattle Education Access / Support services and programming that helps marginalized youth make strong transitions to local community colleges.	10,000
Ryther Child Center / Residential, outpatient, and prevention program for severely abused and/or neglected children.	14,300	Treehouse: Education Engagement Program / Provides comprehensive support and intervention for educational needs of youth in foster care.	10,500
Secret Harbor: Foster Care Resources / Transition resources for youth in residential programming, training and support for foster families, and case management for high-needs youth.	15,000	University District Youth Center - CCS / Continuum of critical services for homeless, at-risk, runaway, and/ or street-involved youth ages 13-22.	11,000
Sound Mental Health: Children's Domestic Response Team / Specialized counseling services to help children and their supportive parents recover from domestic violence.	20,000	Youth Tutoring Program - CCS / After-school tutoring and enrichment program for kids living in five Seattle low-income public housing communities.	14,325
The Mockingbird Society / Foster care system development through youth leadership, legislative advocacy, and extended-family model for foster care.	30,000	YouthCare: Adolescent Emergency Shelter / Shelter, case management, referrals for services, crisis resolution and family reconciliation as appropriate for homeless adolescents.	12,500
World Association for Children and Parents (WACAP): "A Family for Me" Program / Multimedia to help place special-needs foster children with permanent families.	3,550		

Our Mission

NW Children's Fund's mission is to end the cycle of child abuse and neglect by investing in programs for at-risk children and their families, and inspiring informed philanthropy devoted to improving child welfare.

Agency / Program Description	Grant (\$)	Agency / Program Description	Grant (\$)
Strengthening Fragile Families			
Abused Deaf Women's Advocacy Services / Offers refuge, advocacy, counseling, positive parenting and a children's program for deaf and deaf-blind victims of sexual/domestic violence and their children.	14,000	Parent Trust for Washington Children / Support and education services for at-risk families through every stage of a child's life.	12,100
Brigid Collins Family Support Center / Evidence-based services including therapy, case management and parenting education for at-risk families with children birth to 12 yrs old.	14,100	Readiness to Learn Foundation: Families in Transition Program / Integrated support for homeless children and families through community and school-based programs.	5,000
Child Care Resources: Homeless Child Care Program / Provides case management and child care subsidies to homeless children and their families, and customized trainings and materials for homeless family child-care providers.	5,000	Renton Area Youth & Family Services: Kinicare Support Program / Biweekly meetings, advocacy activities, referral services and other support for low-income grandparent caregivers of young children.	7,100
Domestic Violence & Sexual Assault Services: Child & Youth Advocate / Support groups, parenting classes, counseling and CPS case management for youth and non-offending parents exposed to domestic violence and/or sexual assault.	14,200	Rochester Organization of Families / Resources and services for children, youth, and families to achieve a healthy, positive, and drug-free community in the Rochester area.	15,100
Domestic Violence Services of Snohomish County / Shelter, case management and integrated support for victims of domestic abuse and their children in Snohomish County.	6,250	SafePlace: Children's Program / Individualized, age-appropriate services for children living in a shelter for victims of domestic violence.	14,200
Encompass: Family Support Programs / Wrap-around services for vulnerable families including home visitation, family counseling, parent education, parent-child training.	10,500	Solid Ground: Broadview Emergency Shelter and Transitional Housing Programs / Program for homeless women and children, most of whom are survivors of domestic violence.	14,200
Family Education & Support Services / Provides parenting education, kinship support services, and children's programs for at-risk families in Thurston, Mason and Lewis Counties.	10,000	Toddler Learning Center: Early Intervention Program / Education services and therapy in the home for young children and families with intensive medical, mental or social risk factors.	10,000
Friends of Youth: New Ground Bothell Transitional Housing Program / Housing and support services for young moms ages 18-21 and their infants who are low-income and homeless.	15,000	Vine Maple Place / Transitional housing, case management, and advocacy for homeless single parents and their children.	6,000
Healthy Start / Provides critical parenting education, home-visit, and mentoring to low-income, first-time parents under the age of 23 in King & Snohomish Counties.	20,000	Vision House / Transitional housing and integrated support services for homeless mothers and their children.	11,000
Helping Hand House / Basic needs, housing and case management for homeless families and families at-risk of homelessness in Pierce County.	14,200	Wellspring Family Services: Homeless Infant Mental Health Program / Programs to help homeless infants/toddlers and their parents create strong emotional bonds and communication skills.	7,500
HomeStep: Family Program / Provides transitional housing, family advocacy, case management, job training and children's services to homeless families.	15,000	YMCA of Greater Seattle: Building Blocks Behavioral Support Program / Work with families of young children who've previously been involved with CPS to increase safety and structure in the home, and provide services to help prevent abuse and neglect.	14,200
HopeSparks / Specialized counseling for children who have been abused or traumatized, family/ kinship support and parent education.	15,000	YWCA Pierce County: Children's Program / An age-appropriate, therapy-based program to mitigate the effects of early domestic violence experiences, for children in domestic violence shelters.	9,000
Housing Hope: Child Development Program / Therapeutic programming to help homeless and at-risk families overcome barriers to age-appropriate development for their children.	12,000	YWCA Seattle King Snohomish: Children's Domestic Violence Program / In-home, ten-week psycho-educational curriculum for young children exposed to domestic violence and their non-abusive caregivers.	14,000
Interfaith Association of Northwest Washington / Transitional housing, support and case management services to homeless families in crisis.	15,100		
Kirkland Interfaith Transitions in Housing / Transitional housing, support, and case management for homeless families in crisis.	9,200		
Kitsap Community Resources: The Parenting Place Program / Evidence-based, affordable parenting classes to parents who are separated from their children or at-risk of separation due to child abuse and neglect.	8,600		
Mary Bridge Children's Hospital & Health Center: Parenting Partnership Program / Intensive therapeutic home-visiting and group interventions to increase protective factors in families raising medically fragile infants under socially vulnerable conditions.	14,000		



Letter from the Executive Director

Dear Friends,

Thanks to your partnership, NW Children's Fund is stronger than ever. In the past 28 years we have invested over \$12 million to effective organizations that are improving the lives of our community's most vulnerable children, young people and families. We strongly believe, as you do, that critical support of our most fragile members improves our community as a whole.

This annual report details the activities of our fiscal year ending July 31st, 2013:

- NW Children's Fund distributed \$795,550 in strategic grants to 64 dynamic non-profits in Western Washington working hard to permanently change the lives of struggling children and youth. (Please turn to pages 4 and 5 for program descriptions.)
- We had record-breaking attendance at our educational and outreach events. The Forum held at Town Hall Seattle in April, focusing on the practical application of Adverse Childhood Experiences research, drew hundreds of participants from government, education, and the community at large.
- 100% of individual donors' contributions went directly to grants, thanks to the underwriting of all NWCF's operating expenses by board members and sponsors. Our unflagging commitment to steward our donors' funds carefully is demonstrated by our remarkable expense ratio of 86.8%.

Thank you for your continued trust in the integrity and effectiveness of our foundation to make critical investments on your behalf. As we begin our 29th year, we are excited about our continued work with you to make a crucial difference in young lives that will be felt for generations to come.

Warmly and with deep gratitude,

Victoria Peattie Helm
Executive Director
NW Children's Fund



NW Children's Fund's Sources and Uses of Funds

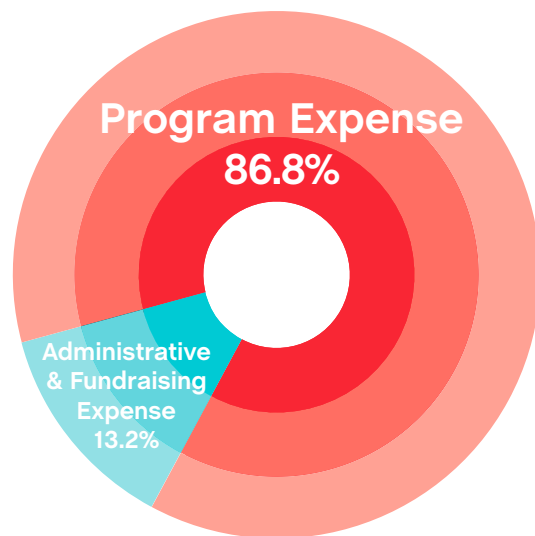
Fiscal Year Ending July 31, 2013

Sources

Private Donations*	\$431,249
Special Events <i>(net of cost of goods sold)</i>	\$563,906
Income from Operating Endowment	\$15,000
Other	\$984
	\$1,011,139

Uses

Grants & Other Program Expense	\$925,501
Administrative & Fundraising Expense	\$140,604
Use of excess reserves**	-\$54,966
	\$1,011,139



* In addition to the donations at left, NWCF received gifts and pledge payments to the Mary Ketcham Kerr Endowment, which had reached a value of \$924,513 (including outstanding pledges totaling \$4,000) at the end of the fiscal year.

** NWCF maintains reserves equivalent to approximately three to six months of its operating expenses.

For the fiscal year ending July 31, 2013, NWCF's total revenue was \$1,146,846, program expenses were \$925,501, and ending net assets were \$1,033,217.

NW Children's Fund gratefully acknowledges the generosity of all our donors—individuals, foundations, and corporations—for gifts made during the fiscal year ending July 31, 2013.

The list below includes monetary contributions to NW Children's Fund, including amounts paid for golf and gala tickets and other items. Endowment gifts, and auction items and other in-kind gifts are recognized separately in the following pages.

Leadership Circle

\$25,000+

Anonymous
 Jim & Diana Judson
 Mary & Peter Kerr
 Matthew & Barbara LePage
 Moccasin Lake Foundation
 David & Valerie Robinson

Founder's Circle

\$10,000 - \$24,999

Anonymous (3)
 Theodore R. Aronson
 Richard & Kathy Bray
 John Cavanaugh
 Hugh & Nicole Chang
 F5 Networks, Inc.
 Henry H. &
 Nancy K. Ketcham Foundation
 Isola Real Estate II, LLC
 Erin Medved
 Norcliffe Foundation
 Cooper & Stephanie Werner

Benefactors

\$5,000 - \$9,999

Anonymous
 Kathleen & Scott Batchelder
 Robert Fries & Debra Dahlen
 Yenii & John Dex
 Monica Fix
 Karen Gunsul
 Darryl Havens
 Fred & Dawn Hines
 George & Carolyn Hubman
 William & Marlene Jenkins
 Lisa & Mike Kelley
 Craig McKibben & Sarah Merner
 Scott Carls & Christine Michalske
 Tom & Terri Olson Miller
 Scott & Valerie Moore
 National Christian Foundation
 Robin Negrin
 Mary & Tim Nelson
 Pacific Wealth Management
 Group at Morgan Stanley
 Monica Butler & M. Peter Phillely
 Bob Power & Michelle Raymond
 Scot & Cody Rogers
 RPX Research
 Elizabeth Rudolf
 Charlotte Sheldon
 Kyle & Jen Sides
 Brereton & Wenona Strafford
 Thomas V. Giddens Jr. Foundation
 Trilog Partnership
 Dennis & Jeanne Trittin
 Karl & Julie Voss

Contributors

\$2,500 - \$4,999

Janice & Dave Alford
 American Seafoods Group LLC
 Aon Foundation
 Bagley Wright Family Fund
 Lynly Beard
 Diane & David Bowlin
 Denny Behrend &
 Gayle Brandon-Behrend
 Jeff & Janeé Christianson
 Sandy & Scot Cocanour
 Terry & Manuela Crowley
 Amy & Paul Curtis
 Jane & Alan Davis
 Robert Short & Emer Dooley
 Extend Networks
 Fenwick & West LLP
 Frommer Lawrence & Haug LLC
 Carlene & Jim Gaudette
 Katharyn Alvord Gerlich
 Alicia & Adam Gold
 Chitra Gopalakrishnan
 Savitha Gowda
 Graham & Dunn
 H.D. Fowler Company
 Randy & Chris Halberstadt
 Kamal & Chandana Hathi
 Jeff & Candy Havens
 Laura & Scott Hayden
 Christopher &
 Victoria Peattie Helm
 Cathy & Donald Hofferber
 Denise & Al Hurlley
 Integrated Archive Systems, Inc.
 Sally Wright Johnston
 K&L Gates, LLP
 Koehler & Company
 LeClairRyan
 John Parchem & Barbara Lycett
 Rob & Gina Maguire
 Sidney & Carson May
 Scott & Shelley McIntyre
 TE & Judy Mullane
 Gwen & Russ Nomi
 Eric Nordling
 Ms. Hilary Peattie
 Laura Garcia & Mark Pendergrast
 Perkins Coie
 Kelly Kolb & Stephanie Robinett
 Nancy Robinson
 Rosen Lewis, PLLC
 Runde & Co. LLC
 Joseph & Midori Sacotte
 Karen Samuel
 Santa Barbara Foundation
 Lisa Kjaer-Schade & Scott Schade
 JK & Randy Schatzman
 Robert & Karen Sheppard
 Patricia Lee & John Smith
 Kim Stebbens
 Kevin & Tina Steiner
 Tacoma Rainiers
 Caryn Buck & Andy Thomas
 Stacy Thrailkill
 Andrew & Barbara Turner
 Heidi Vanderlaan
 Washington Partners, Inc.
 Wells Fargo Advisors
 Kathryn Williams
 Wilson Sonsini Goodrich & Rosati
 Carlos & Ramalee Wulf

Supporters

\$1,500 - \$2,499

Anonymous
 Marie Stanislaw & Steve Abel
 Betsy & Steve Amento
 Mark & Susan Anderson
 Matt & Judy Bloom
 Richard Buchanan &
 Stacey Brower
 Greg Brown
 Scott & Cathleen Brueske
 John & Angie Campa
 Caryn & Eric Casterline
 Neil & Melissa Chasan
 Columbia Bank
 Jim & Paula Debo
 Steve Rimmer & Leslie Decker
 The Dex Family Foundation
 Alice & John Dulin
 Pam & Kenneth Eakes
 Christian & Elisabeth Engstrom
 Kathy Fleming
 Don & Patricia Galvanin
 Ray Gimbernat
 Corey & Hunter Golden
 John & Kim Gray
 Jennifer Guild
 Scott & Nancy Gulick
 Candace Tkachuck & Don Guthrie
 Frederick & Catherine Hayes
 Lisa M. Jelic
 Joseph & Cathy Linn
 Garth & Tawnya Luke
 Lex Lindsey & Lynn Manley
 Marty & Susan McCurry
 Patti & Mike Meyers
 Mr. & Mrs. Mark Murray
 Laurie Boehme & Mark Muzi
 Greg & Laurie Nelson
 Opanga Networks, Inc.
 Mr. Thomas Padilla
 Joseph & Nancy Pearl
 Scott & Heidi Peiper
 Louis & Cheryl Perazzoli
 Shelly Kay & Medby Pfeiffer
 Leslie & David Pickering
 Mark & Cindy Pigott
 Jeff & Dee Reiff
 Van Rex Gallard & Sheila Remes
 Angela & Ron Souza
 Sandy & Jeff Teper
 Steve & Karen Van Til
 Raja & Madhu Vengopal
 Minee & Malay Verma
 Allen & Betsy Webb
 Nina Weber
 Nobuko Wiles
 Pat & Lori Wiley
 Gary Justiss & Monica Williams
 Richard & Louise Yarmuth

Friends

\$1,000 - \$1,499

Anonymous
 Chap & Eve Alvord
 Pat Atkinson
 Hall & Dorothy Baetz
 Carolyn Corvi & John Bates
 Michele Bayle
 Grace Nordhoff &
 Jonathan R. Beard
 Alexander Bennett
 Debbie Berry
 Alan & Sally Black

Jim Stewart & Deborah Black
 Bruce & Sherry Carbarry
 Stanley & Susan Carlson
 Ted Wang & Marilyn Chen
 Debra & Matt Dawson
 Mike & Laura Delman
 Delman Family Trust
 Denny & Katie Driscoll
 Steve & Vicky Drury
 Nadine & Don Fidler
 Sally Ketcham & Alyx Fier
 Mary Fjelstad
 Tom & Dawn Flookes
 Jim & Marilyn Fries
 FTI Consulting, Inc.
 Wayne & Anne Gittinger
 Kelly Grace
 Daniel Dex & Geoff Hall
 Jonathan Heras
 Cami Holmberg
 Rob & Vanessa Howie
 Huntington Steele LLC
 David Thompson &
 Judy Jesiolowski
 Melanie Keisor
 Shane & Dana Kim
 KPMG LLP
 Ted & Pam Kummert
 Lance & Linda Lamprecht
 Colt Boehme & Jackie LePage
 Richard & Tracey Locke
 Steve & Tamie Malaska
 Mark & Tammera Mason
 Mr. John Matthews
 Todd & Mimi Menenberg
 Cheryl L. Buck & Susie Miller
 Miller Nash LLP
 Morningside Foundation
 Todd & Mary Nelp
 Teresa & Clint Noonan
 Chuck Nordhoff



Northwest Center for Aesthetic
 Plastic Surgery
 NW Venture Philanthropy
 Robert Overhus
 Kirstin & Joe Peterson
 Steve & Sue Petitpas
 Mary Pigott
 PNJ Machining
 Portent, Inc
 Preg O'Donnell & Gillett PLLC
 Christine & Mark Protus
 Mala & Suri Raman
 Kathy Reid
 Kim & Ken Reneris
 Andrea & Lee Rodewald
 David Rothenberg
 Calvin Rowland
 John & Nancy Rudolf
 Janet & Bob Rudolph
 Norman & Patricia Scott

Sheldon Manufacturing, Inc.
 Sound Financial Group
 Van & Nancy Strom
 Structured
 Glenn & Karen Sumida
 Kim Thomas
 Washington Women's Foundation
 Tanya Trejo & Keane Watterson
 John Wolfe
 Paul & Susie Wyckoff

\$750-\$999

Anonymous
 LeAnn Ashford
 Becky Byrd & Owen Ashurst
 Vadim & Deirdre Bondarev
 Laura Boyle
 Rob & Tammy Braun
 Jonathan & Gretchen Burks
 Evan Castiglia & Lyndsay
 Cavanaugh Castiglia
 Alicia Cervini
 Brad & Judy Chase
 Kate & Casey Christ
 Mr. John Culbertson
 Jennifer Dressing
 Michael Grant
 Kathy & David Gusdorf
 Ms. Catherine Heide
 Daniel Higgins
 Jeremy & Kris Higginson
 Kathryn Jones
 David Keller
 Jeanie Ketcham
 Heidi Kuipers
 Jennifer Landick
 Bruce Leamon & Janet Mead
 Sharon Over
 David & Marie Shiflet
 Ellen & Pete Stone
 Doug & Deb Symmons
 Laurie Thayer
 Ronald Vrambout

\$500 - \$749

Chris & Desirae Ballard
 Patricia Banasky
 Janie & Ian Bell
 Ronald L. Berenstein
 Beth Billington
 Fraser & Deirdre Black
 Thom Collier & Mary Cabrian
 Muffie & Bob Cohen
 Anne Simpson & Charlie Conner
 Denise & Eric Convento
 Matt & Laurie Deveny
 David DeVisser
 Dr. & Mrs. Walter & Ruth Dex
 Marc Diamond
 Johnny Boyer & Kalynn Dibble
 Mary & Jim Dunnam
 Alicia & Nate Eimers
 Brian Evison
 Hod & Stephanie Fowler
 Anne & Jon Fox
 Alan & Mary Frazier
 Berend or Carla Friehe
 Laura & Tony Galbato
 Gobble Restaurant Group LLC
 Gobo Enterprise
 Graham & Wood Graham
 Charlotte Guyman
 Danita & David Herbig
 Robert Homchick

Seth & Tara Howard
 Gretchen Hull
 Michael Isensee
 JM Eagle
 Daniel & Elaine Johnson
 Natanya Bednarski &
 Gregory Johnson
 Carrie George & Ditman Johnson
 Dave & Deborah Jones
 Steve & Carole Kelley
 Amy & Eric Knapp
 Robert Krishenbaum
 L Suzman Insurance Co
 Nanette & John Latham
 Roger Layman
 Wenzel & Julianne Leff
 Jayne Lindley
 Littler Mendelson Foundation, Inc.
 Joseph & Dana Manalang
 Mr. Travis Marshall
 Travis Martinez
 Rich & Candy Mathes
 Adrian Medved
 Jim & Emily Morrison
 Jim & Lori Leff Mueller
 Helen Naini
 Frances Gmur & Andy Osman
 Pacific NW Sales Company
 Jana Pagaran
 The Pampered Chef
 William & Mary Susan Pitlick
 Janet & Chuck Pliske
 Amy & Matt Rudolf
 Kristi Nilson & Pat Sanford
 Patricia & David Sauntry
 Stacy Schatz
 Dr. Jorge Garcia &
 Dr. Barbara Schinzingler
 Kent & Kathy Schoenrock
 Judith & Bob Sentz
 Craig & Jodi Sides
 Kim & Carolyn Smith
 Desiree Smith
 John & Lynn Strong
 Lynne & Wayne Sylvia
 Ann Taylor
 Theresa & Ted Tollefson
 Theresa & Rick Torseth
 Chuck Chan & Mei-Chin Tsai
 Gary & Darcia Tudor
 United Jewish Foundation
 Jesse & Janet Urias
 Mary Vail
 Tony & Jackie Valentine
 Liz Engelhardt & Tom Vaughan
 Don Verfurth
 Vinyltech Corporation
 Mark Vossler
 Mike & Laura Wallace
 Ken Warren
 Priscilla & Timothy Wiest
 David Wold
 Charley Dickey &
 Sheila Wyckoff-Dickey
 Kathryn Crandell & Jack Yaeger

\$250 - \$499

Anonymous (2)
 Carol & Paul Abodeely
 Abused Deaf Women's Advocacy
 Services
 Active Construction Inc.
 Paul Adams
 Greg & Nanette Baker
 Kate Bayley
 Susan Berry
 Ed & Kelly Billington
 Brandon Blazer
 William J. Bodker
 Greg & Rayni Boehme
 Adele Brady Bolson, CPA PS
 Carl Brandenburg
 Steve & Linda Brown
 Dr. & Mrs. Charles Buck
 C James Judson, Inc., PS
 Lucy & Dick Cook
 Judi Mitchell & Larry Crim
 Ryan Domino & Ashton Crossley
 Thomas & Kathleen Dahlby
 Kim & Aaron DeWeese
 Lori Menday & Jay Dinnison
 Darlene Dobson
 Domestic Violence Services of
 Snohomish County
 Elevation Cellars
 Dan Embick
 Alden M. Garrett &
 Charlie C. Eriksen
 Jim Everard
 Michael Feeder
 Danny & Lori Feig-Sandoval
 Pat & Sara Fox
 David Marques & Janet
 Frohnmayer
 Peggy Glick
 Goldman Sachs Philanthropy
 Fund
 Mike & Linda Grady
 Mr. Lee Grogg
 Karen Hansen
 Libby Hartung
 John Haskell
 Pam Bekins & Hamilton Hazlehurst
 Mr. Jared Higbee
 Grant & Shelby Hosford
 Debbie & John Howie
 Leah Idler
 Jack Jerome
 Caroline Kay
 Russell Keyes
 Melanie King
 John & Anne Kinsella
 James & Suzanne Kolenski
 Eric & Janet Kormondy
 Janis Avery & Mary Kubrich
 Jacqueline Lee
 Mark Long
 Jonathan Drachman &
 Paula Lozano-Drachman
 Steve McChesney
 Phillip & Tamara McConnell
 Thyra & Ian McKelvie
 McKinstry Co Charitable
 Foundation
 Ron & Calli Medved
 Dennis Melton
 Mark Mendel
 Randy L Miller
 Elizabeth Miller
 Lee & Julie Monson
 The Myhrvold Family Charitable
 Fund
 Becky & Nitya Nadesan
 Monica Nelson
 Jeffrey Keane & Martha Noerr
 John Norden
 Northwest Cascade, Inc.
 Terry & Ed O'Brien
 Moira & EB Okrasinski
 Outlier Solutions, Inc.
 Thomas & Michelle Parsons
 Lisa Pascuzzi

Paul Pearson
 Pinnacle Acupuncture LLC
 Anita Polt
 Sasha & Lowell Press
 Cathy & Michael Radcliff
 Kimberly & Richard Rawson
 Rich Johnson & May Reed
 Ellen Roth & Dan Roach
 Katie & Patrick Rossman
 Heather Kroll & Kevin Ruddell
 Dan & Susie Sheldon
 Susan & John Skovron
 K. Alan Smith
 Elizabeth & Tracey Steig
 Steve & Liann Sundquist
 Paul & Linda Hunter Suzman
 Patia Woods & Peter Swart
 John E. Suhm & Susan Swartz
 Dave Hancock & Lynn Thorburn
 Ms. Judith Tucker
 Eric & Karen Ullery
 Stacey Walters
 Joanne & Wallace L. Weller
 Mr. Norman V. Welter
 Shane Williams
 Kevin Foreman & Sara Williams
 Dan & Jamie Williams
 Deanne Witt
 Seena Wise & David Wold
 Leah Wong
 Mrs. Virginia Bloedel Wright
 Nicole & Andre Young

\$100 - \$249

Kurt & Nikki Adams
 Stephen Rupp & Meg Agnew
 Dean & Gigi Altaras
 Leslie Helm & Marie Anchoroguy
 Barbara Anderson
 Howard Goodfriend &
 Helen Anderson
 Lawrence Asher
 Kristin Ashton
 Gary & Mitzi Aspiri
 Robbie & Pauline Bach
 Elizabethbacher
 Jill D. Bader
 Lea & Niranjana Bose
 Mary & Jerry Brennan
 Ron & Sheila Brunsch
 Cristin Burris
 Anne & Jim Carden
 Ross & Julie Case
 Patty Tsao & Andrew Chen
 Leonard & Else Cobb
 Taylor & Anita Collings
 Kathy & Allan Collins
 Columbia Asphalt & Gravel, Inc.
 Community Foundation of Greater
 Memphis
 Robert Contreras
 Terry Cottrell
 Richard & Ann Berner Counsel
 Clifford Curtis
 Davis Sales Ltd
 Jeffrey & Colette Deprez
 Judith Dern
 Vibhuti Desai
 Christopher & Luann Desautel
 Craig & Whitney DeVine Family
 Rick Dodd
 Trina Doheny
 Denise & Brian Donaldson
 Pat Doody
 Mr. David Dotson
 Julie Douglas
 Matthew & Elizabeth Downs
 John Drescher
 Kenneth Dudunakis
 Susan & Patrick Dunn
 Mr. Julian Eames
 Lori & Rick Eberle
 Cheryl Ebner
 Duane Edwards
 Rob MacAulay & Keri Ellison
 Mary-Clayton & Christoph

Enderlein
 Mike Sylvanus & Melissa Evangelos
 Tom Evans
 Terry & Tammy Fahlstrom
 Scott & Katie Farrington
 Barb Ferguson
 Dave & Jill Follett
 Bobby & Edith Forch
 Frank J. Martin Company
 Diane & Walt Freytag
 Paul Masaki & Jill Gallie
 Susan Gertz
 Linda & Scott Gettman
 Gidgette Bardot
 David & Christine Ginsberg
 Dave Cutler & Debbie Girdler
 Patrice Godefroid
 Michelle Gretsch
 Nancy Griese
 John & Lissa Leff Griffith
 Mayten & John Gross
 David & Lodie Grubb
 Brooks Gunsul
 Ruth Ann Hackenbracht MA,
 CCC-SLP
 Mr. Mark Hanna
 Mindy Harris
 Carol & Dave Hoag
 Darcy & Gary Hollie
 Rob Howe
 Ted & Cheri Huber
 Iliad, Inc.
 Brian & Katherine Iverson
 Anoop Gupta & Yumi Iwasaki
 Jim & Yvonne Izett
 Dr. & Mrs. Bob & Linda Johnson
 Kevin Johnson
 Tetsuden & Kanako Kashima
 Derek Rodrigues &
 Larisa A. Kaukonen
 Kurt & Barbara Keene
 Steven J. Kessler
 Dar Khalighi
 Monika & Sumant Kher
 David Kirker
 Eunice Kjaer
 Carol & Steve Koehler
 Jeff Koontz
 Ms. Sandy Kubishta
 Chris Lang
 Miranda Lee
 Mr. Jonathan Lloyd
 Mike & Marie-Christine Longo
 Christine Bellas & Quinn Loucks
 Cathy Krug & Erik Lundberg
 Scott Lyon
 John Davis & Kathleen MacFerran
 Marcie Maxwell
 Paul & Jeanie May
 Leasa & Brian Mayer
 Richard Szeliski & Lyn McCoy
 Kevin & Emily McKeon
 Lynn & Doug McKeown
 Livingston Wernecke &
 Gardis Meergans
 Glenn & Richelle Miller
 The Mockingbird Society
 Ryan & Ruth Mork
 Melissa Mouw
 Mr. & Mrs. Yuval Neeman
 Barbi & Wil Nelp
 Mr. Jesse Nelson
 Maren Nelson
 Julie Brittain & Gary Nelson
 Eric Nissen
 Oak Harbor Freight Lines, Inc.
 Kathleen O'Connell
 Karen & Daniel Oie
 Olympic Foundry Inc.
 David & Jo Orbits
 Orenco Systems Inc.
 Jim Adcock & Anne Otten
 Carl Osberg & Tami Ott-Osberg
 Michael Page
 Jaret Palmer
 Norman Pfeiffer
 Pivetta Brothers Construction, Inc

Kevin Pletcher
 David Poore
 Gail & Larry Ransom
 Patrick J. Repetowski
 Rob Reynolds
 Kelly & Dave Rickenbach
 Althea & Bill Riley
 Cindy Roadifer
 Carla Murray & Tom Robinson
 John & Jean Rolfe
 Romac Industries Inc.
 Kit & Chelsea Rosenberger
 Melaine & Todd Ruberg
 Marcy Ruffo
 RV Associates, Inc.
 Ryther Child Center
 Ingrid M. Salmon
 Santana Trucking and Excavating, Inc.
 Gary & Dee Dee Schaefer
 Oliver & Coleen Schneider
 Wim & Phyllis Schut
 SCI Infrastructure, LLC
 Seattle Mariners Baseball Club
 Susanne & Bernie Seidel
 Jubilee Seth
 Joseph & Noelle Sheehy
 Shoreline Construction Co.
 Elvira & Gursharan Sidhu
 Steven & Kathleen Smith
 Diane Smith
 Kurtis Snow
 Tim & Carolyn Snyder
 Nancy Staley
 Hobia & JoAnn Stebbins
 Brenda & Mahlon Stephens
 Mary Fazedin & Steve Stuart
 Robert & Rhonda Sturton
 Aarthi Subramani
 Team Nelson &
 Sons Construction Co. Inc
 Cheryl Terry
 Jim Theofelis
 George & Ginny Thomas
 Elaine Thompson
 Carrie & Mike Ulvestad
 Mark Selleck & Sheri Vail
 Ms. Dana Vandermeij
 Joshua & Katy Venters
 Kim & Jeff Wallis
 Mark & Karen Warner
 Washington Dept. Veterans Affairs
 Margaret Ann & Graham Watson
 Ronna & Jordan Weltman
 Ted Wight
 Roxanne & David Wiley
 Donald Williams
 Marlene & Roger Winter
 Justin & Stacy Wood
 Jim Yand
 Diana Young
 Jill Zemp

\$1 - \$99

Anonymous (2)
 Sarah & Eric Aasheim
 Accounting Solutions Partners LLC
 Iris Aguilera
 Evon Aldrich
 Amara
 James & Carol Anderson
 Mary Jane & Gilbert Anderson
 Mark Anderson
 Aon Risk Services
 Mr. & Mrs. Scott A. Armstrong
 Vikas Bahirwani
 Tom Bakamus
 Tommy Bakamus
 Michael Bamford
 Jess Barber
 Cory Barker
 Jerry Barney
 Betty Barrows
 Rebecca Benson
 Paula Bentz
 Audrey Berglund
 Lori Black



Edric Boneham
 Teresa Bowns
 Guy Bowman
 Phil & Sherry Bradshaw
 John W. Branch
 Alice Braverman
 David Brereton
 Mike & Amy Brock
 Mr. &
 Mrs. Christopher J.S. Brookes
 Marguerite & Dick Brown
 Rhett Brown
 Andrew Bryant
 Julianne Bukey
 Denise Burningham
 Jim & Julie Burrage
 Eric Camm
 Tushani Canuteraja
 Maria Carlos
 Mr. Duane Carr
 Mary Cate
 Kevin Chan
 Yueh-Lin Chen
 City Ministries Child Placement
 Agency, LLC
 Mark Coen
 Ann Marie Collier
 Madeleine B. Connolly
 Desirae Cook
 CR Construction, LLC
 Mr. Chris Cunningham
 Ellen Daffron
 Susan Dahlem
 Cyrus Deboo
 Carolyn Decaires
 Roby Delzer
 Beth Dingman
 Edwin & Thelma Dirkes
 Richard & Kathie Divers
 Mike Dolder
 Amy Donnelly
 Dr. Diane Doppell
 Nick Drader
 Brenda & Frank Duke
 Josh & Annie Dumond
 Janine & Rorry Dunbar
 Dean & Janeice Dunlap
 Charles & Judith Durbin
 Ethan Durden
 Adair Ellison
 Mary Englin
 Dan Evans
 Nina Evers
 Exodus Housing
 Family Education & Support
 Services
 Federal Way Sand & Gravel
 Gordon Ferguson
 Nicole Ferrero
 Bruce & Susanne Foster
 Ralph Fragale
 Mary Franck
 Nikki Fretwell
 Friends of the Children
 Bill & Carol Furrer
 Dolly Gibbons
 Anna & Randy Gilbert
 Mark R. Giles
 Janet Gindin
 Joey & Frannie Giovacchini
 Harold Gold
 Nicole D Goodman
 Gail Gosney Wrede
 Kathleen Graff
 Mindy Gravley
 Suzanne Gray
 Gareth Green
 Kathleen Groshong
 Lisa Gsellman
 Tom & Janet Gunby
 Frances & Richard Gustav
 Ellen Haertl
 Lynne Hagen
 Rita Hagmeyer
 Samuel & Mary Alice Hall
 Henry & Susan Hamilton
 Holli Hanson

Lawrence & Hylton Hard
 Mary Hatlen
 Mary Lu Hawes
 Mark Heine
 Beverly & Steve Heising
 Brian Fix & Jessica Susan Helm
 Mike Hetzler
 Andy & Molly Hill
 Jasmine Hill
 Mr. Eric Hineman
 Catherine L Hinrichsen
 Mr. Mark Hipkiss
 Lisa Honsberger
 Robin Horrel
 Corinne & Steven Howells
 Ryan & Margery Huff
 Kevin Hunt
 Mike Hutchings
 Incentives by Design
 Michael & Jenny Jackman
 Jessica Jackson
 Hank Jacobsen
 Rhonda James
 Shannon Jaminah
 Mr. & Mrs. Anthony Jelic
 Ms. Margaret Jelic
 Lisa Jelinek
 Karin Jensvold
 Ms. Elsie Jerkovich
 Peter Johnson
 Dan & Darcy Johnson
 David Johnson
 Shilo Jones
 Roger Jones
 Thomas Kang
 Laura Kastner, PhD
 Jayne Kauzloric
 Jerome & Michelle Kavesh
 Hana & Mike Kern
 Frank & Patricia Kerr
 Dan Kettman
 Kamiar Kiani
 Kinderling Center
 King Sales Company, Northwest
 Lindsay Klarman
 David & Thea Kleiber
 Abraham & Elaine Kleiman
 Jill Klein
 Kitty Knapp
 Mr. Mike Knoll
 Tom Koch-Weser
 Sondra Kornblatt
 John Korzenko
 Toni Kotschwar
 Mr. Steve Kramer
 Jo & Bill Krueger
 Ross & Dana Kruse
 James Rogers, III & Pamela Kulin
 Norbert & Kimberly Kusters
 Stewart Landefeld
 Doneka Lang
 Jennifer Larson
 Mr. Greg Latendresse
 Mr. & Mrs. Matt &
 Andrea Figueroa Latimer
 Layfield Environmental Systems
 Corp
 Ed Lee
 Patrick Lee
 Helen Lee
 Gunnar Leinberg
 Brian & Marianne Lewis
 Carla Lewis
 Laila & Ole Lie
 LifeWire
 John Locher
 Dennis & Tamera Longstaff
 Devon Love
 Jason & Linda Lowry
 Cathleen MacCaul
 Byron Manering
 Timothy Manry
 Paola Maranan
 Edgar Masmela
 Aileen & Chris McConnell
 Brent & Karen McCullough
 Margaret McCurdy

Ann McCutchen
 Mr. Joe McDermott
 Terry Ann & Thomas McEachern
 Marilyn & Michael Kelch McIntyre
 David & Tracey McMorris
 Jennifer Mechem
 Shawn & Janee Medved
 Lola Michelin
 Steven A Miller
 Sheree Miller
 Bettylu Miller
 Lea Ann Miyagawa
 Claire Molesworth
 Brad & Penney Montzheimer
 Kathleen Moore
 Lynette Moore
 Dr. John & Ms. Laura Moore
 Joe & Teresa Morrow
 Tommy Mullins
 Ryan & Megan Neal
 Nancy & Brian Nelson
 Chad Nelson
 Bridgid Normand
 Todd & Cinda Norton
 Jeffrey & Lisa Ockerman
 Wendy Ogden
 Elizabeth Ohollaren
 Olive Crest
 Olson Investments
 Mark P. Walters
 Gene Palm
 Pamela Panopio
 Parent Trust for Washington
 Children
 Mr. Paul Parker
 Moss & Peg Patashnik
 Caroline Peattie
 Susan & Bo Peck
 Peter Pecora
 Joseph Harbour & Cheri Perry-
 Harbour
 KN Peterson
 Bruce & Donna Phares
 Philanthropy NW
 James Porteous
 Herb & Rachel Portillo
 Kai Post
 John & Katarina Powell
 Christine Pozerycki
 Melissa Raap
 Corey & Shannon Rasmussen
 Bill Rasmussen
 Shamitha Reddy
 Joe & Kelly Reimer
 Peter Retztagg
 Pat Ringland
 Carol Rockhill
 Jason Rodriguez
 Mr. Bracey Rogers
 Ron Rogness
 Rudi Romaine
 Amanda Rose
 Betsy & Marshall Rose
 Annie & Dale Roth
 Ashley Roth
 Tom & Jaime Ruth
 Sallal Water Association
 Bill Sanders
 Marie Sauter
 Mr. Steve Schreiner
 John Schumacher
 Casey Scott-Mitchell
 John & Anne Shea
 Shell Excavating Inc.
 Jason & Trish Sherman
 Cynthia Shurtteff
 Robert & Stephanie Smart
 Madelyn & Robert Smith
 Rosita Smith
 Jason Smith
 Preston Soames
 Rasmus Soerensen
 Douglas Solis
 Michele Sorenson
 Mr. Dax Stanley
 Dr. George Stephens
 Carrie Stuart

Jean Sturton
 Amy Svensson
 Frank & Cassie Tabery
 Jesse Tabisula
 Tarah Taggart
 Connie M Taggart
 Ulric & Christine Talley Miller
 Marc Taylor
 Margaret Terry
 Sue Reichert & Robert Thomas
 Sherry Thomas
 Scott Thompson
 Madelaine Thompson
 Hung To
 Chris Togawa
 Dan Torres
 Mary Totten
 Treehouse
 Steve Trester
 George & Cindy Tronsrue
 Hanh Troung
 Andrew H. Tsao
 Ward Urion
 Vine Maple Place
 Vision House
 Marcia & Peter Wahlman
 Lisa Wallace
 Joe & Barbara Walton
 Allan & Sally Walton
 Jerry & Jaqui Weber
 Robert West
 Whatcom Family & Community
 Network
 Jenny Wheeler
 Brian & Sonja Whitaker
 Jim Whitney
 Shirley Williams
 WithinReach
 Daniel & Judith Witmer
 Michael & Vicki Wittenberger
 Mark & Penny Wolsky
 Jody & Terry Wood
 Bruce Wood
 Allen & Jan Woodard
 Ruth Woods
 Bruce & Kim York
 Yang You
 Dianna Zaorski
 Quen Zorrah

Recognitions

In Honor of Pam & Gary Beil, Andy Beil, Charlie & Coral Beil, Charlie & Judy Herring, Fran Pitlick & Jerry Bernstein, John Pitlick & Becky Thomas, Helen & Carl Pitlick, Heidi & Larry Nuti, Jan St. Peter & Paul Pitlick, Jeanne Eagleson & John Gray and Betsy Pitlick
William & Mary Susan Pitlick

In Honor of Janice Alford
Lynette Moore

In Honor of Charles Billington
Josh & Annie Dumond

In Honor of Yenii & John Dex
Sarah & Eric Aasheim
Dr. & Mrs. Walter & Ruth Dex

In Honor of Marc & Beth Droppert
Berend or Carla Friehe
Russell Keyes
Mark Mendel
Ellen Roth & Dan Roach
Joanne & Wallace L. Weller

In Honor of Sidney May
Herb & Rachel Portillo

In Honor of Mary Nelp
Susan & Bo Peck

In Honor of Gael Owen
Jeff Koontz

In Honor of Patricia Lee & John Smith
Denise & Al Hurley

In Honor of Susan & Chris Valauri
James Rogers III & Pamela Kulin

Matching Organizations & Workplace Giving Campaigns

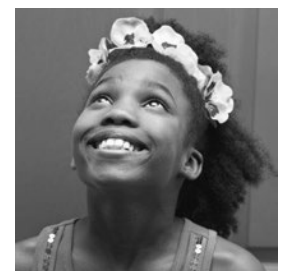
The following organizations & programs have leveraged the impact of their employees' donations through workplace giving campaigns or with matching gifts:

Employer Matching Organizations
 Attachmate Corporation
 Bill & Melinda Gates Foundation
 Costco Wholesale
 Macy & Company, Inc.
 Microsoft Matching Gifts Program

Workplace Giving Campaigns
 BNY Mellon Community Partnership Employee Funds
 City of Seattle Combined Charities Campaign
 Community Foundation of Greater Memphis
 Employee's Community Fund of Boeing Company
 King County Employee Giving Program
 United Way of Columbia-Willamette
 United Way of King County
 Washington Combined Fund Campaign

Auction Donors
 The following individuals & businesses donated items to our silent & live auctions.

The 5th Avenue Theatre
 Alaska Airlines
 Dave & Janice Alford
 All Recipes.com
 Alvin Goldfarb Jewelers
 Arena Sports
 Argosy Cruises
 LeAnn Ashford
 Aaron Baggenstos
 Barons Winery
 Lynly Beard
 Beaux Frères, LLC
 Beecher's Handmade Cheese
 Bella Dental Care



Belltown Pub
 Better Air NW
 bFit Bellevue
 Bikram Yoga Renton
 Shayn & Jendi Bjornholm
 Leora Bloom
 Blue Ribbon Cooking
 Blue Thunder
 Bob Fries & Dee Dee Dahlen
 Laurie Boehme
 Bow Lake Watersports
 Diane & David Bowlin
 Kathy & Rich Bray
 Brix Wine Cafe
 Megan Brody
 Brenda Brown
 Julie Brown & Tom Agosti
 Kathy Brunker, World of Wines
 Cheryl Buck & Susie Miller
 Butler Valet & Transportation
 Cactus Restaurants
 Café Juanita
 Ileana Calinoiu, MD
 Camille's Dance Edge
 Capers
 Capstone Farm
 Captain Whidbey Inn
 Peter Caruso
 The Cask and Schooner
 Restaurant
 Rick & Mary Chalker
 Tharika Chandrasekhar
 Nicole & Hugh Chang
 Chris Hopkins Illustrations
 Robbie Christmas
 City Mouse Studio
 The Coats
 Sandy & Scot Cocanour
 Charlie Conner
 CosMedic Skincare
 Creekside Angling Company
 Crystal Seas Kayak
 Paul & Amy Curtis
 Cye Photography
 Davidson Galleries
 Jane & Alan Davis
 Leslie Decker & Steve Rimmer
 Troy Dettman
 Deborah Dewey
 Yenii & John Dex
 DigiPen Institute of Technology
 Disney
 Mark & Sally Ditzler
 Roberto & Gina Donati
 Dr. Dre/Beats by Dr. Dre
 Jennifer Dressing
 Marie Durlinger, DDS
 Eclectic Home

Alicia & Nate Eimers
 El Gaucho
 Elliott Bay Brewing Company
 EMP Museum
 Evergreen Hospital Baby &
 Family Boutique
 Everybody Therapeutic Massage
 Fins Bistro
 Monica Fix
 Flat Iron Grill
 Kristin Ford
 Fremont Brewing Co.
 Friends of NWC
 Patricia & Donald Galvanin
 Rana & Brian Gardner
 Gary Manuel Salon
 Gentry Aesthetics
 Genuine Image Photography
 Gobble Restaurant
 Alicia & Adam Gold
 Chitra Gopalakrishnan &
 Aarthi S. Mani
 Irfan & Shelina Gowani
 Savitha Gowda
 Elaine Grenier, C&G Wine
 Distributor
 Randy & Chris Halberstadt
 Catherine Halloran
 Katy Kinney Harris
 Randi Hedin & Andrew Gardner
 Beverly & Steve Heising
 Jim Heising
 Victoria & Christopher Helm
 Kate & Tom Henwood
 The Herbfarm Restaurant
 Rich & Erica Hermsen
 High Desert Museum
 Andy & Molly Hill
 Hilling Design
 Cathy & Donald Hofferber
 Holiday Inn Express Hotel &
 Suites - Pullman
 John Howie
 Hughes Studio Architects
 Inn at Langley
 Jaken Medical, Inc.
 Erin Loman Jeck
 Jewelry Workshop
 JM Cellars
 Brent Johnson
 Peter Johnson
 Elizabeth Jones
 Kim Jones
 K. Alan Smith, Gem & Jewelry Salon
 Kenmore Air
 Kevin Cruff Photo
 King's Market
 Lisa Kjaer-Schade & Scott Schade

John Kozol
 Shailaja Krishnamurty
 Bill Krueger
 Ted & Pam Kummert
 Matt Lee
 Angelica Lenning
 Amy Lewallen
 Richard & Tracey Locke
 Erik & Zoey Liedholm
 Lincoln Square Cinemas
 Richard & Tracey Locke
 Judith Logan
 The Love Handles
 Russell Lowell
 Salli Lucker
 John Lui, DDS
 Garth & Tawnya Luke
 Lula Ruby Organic Salon
 Lulu Jewelry
 Maker Faire
 Marcus Whitman Hotel &
 Conference Center
 Marination
 Mark Ryan Winery
 Matthews Estate
 Maude May
 Scott McCarron
 Michael Rosenberg Photography
 Chelle Miller
 Dale & Kari Miller
 Randy & Sandra Gail Miller
 Beverly & Steve Heising
 Lee & Julie Monson
 Vu Montgomery
 Nature's Path Foods Inc.
 Neiman Marcus
 The Mountaineers Books
 Mary Nelson
 David Nestvold
 News Corporation/Fox
 Entertainment Group
 Nike Golf
 Kristi Nilson
 Nintendo of America, Inc.
 Russ Nomi, DDS
 North Bend Theatre
 Northwest Face
 Northwest Landcare
 Northwest Outdoor Center
 'Ohana
 Lisa Orenstein
 Orvis Bellevue
 Pacific Science Center
 Pandora Cellars
 Parkside Stables
 Debbie Payton & Jeff Cox
 Marie Peters
 Sue Petipas
 Shelly Kay & Medby Pfeiffer

Pinnacle Acupuncture &
 Associates
 Rachael Podolsky / J. Hilburn
 Custom Men's Clothier
 The Poker Widows
 Jack Praino & Esadeta Atic
 Puget Sound Energy
 Queen City Grill
 Michelle Raymond & Bob Power
 re:public
 Renew Fitness
 Pamela Rhodes
 David & Donna Robbins
 Stephanie Robinett & Kelly Kolb
 Valerie & David Robinson
 Rotary Club of Sammamish
 Rouxbe Online Cooking School
 Lars Ryssdal
 Tracy Sahagun, Guayamas
 Cantina
 Salty's Seafood Grills
 Karen Samuel
 JK & Randy Schatzman
 Kory Scroggins
 Seastar Restaurant & Raw Bar
 Seattle Aquarium
 Seattle Gymnastics Academy
 Seattle Repertory Theatre
 Seattle Shakespeare Company
 Seattle Sounders FC
 The Seattle Times Co.
 Bob & Gayle Seda
 Judith Sentz
 Andy Shanks
 Sidelit Nature, Aaron Nataraj
 Sonora Resort
 Sound Sports
 Spitfire
 Sports Reaction Center
 Nancy Staley
 Kim Stebbens
 Stella & Dot by Heidi Kuipers
 Stevens Pass Mountain Resort
 Wenona & Brereton Strafford
 John Sundstrom
 Super Jock n' Jill
 Scott Swingle
 Tammy Davison Bella Photography
 Target
 Tesla Motors
 Elaine Thompson
 Tom Douglas Restaurants
 TPC Snoqualmie Ridge Golf Club
 Tanya Trejo & Keane Watterson
 Barbara & Andrew Turner
 Tutta Bella Neapolitan Pizzeria
 UBER
 Umi Sake House

Tony & Jackie Valentine
 Cory Vicens
 Village Property
 Village Theatre
 Susan Walukiewicz
 Wasabi Bistro
 Waypoint Outdoor, Inc.
 Wendy Cole Collections
 Dick & Leslie West
 West Seattle Fabric Company
 Priscilla & Tim Wiest
 David & Kathryn Williams
 Wine.com
 Scott & Jenny Woerman
 Susan Wold
 Leah Wong
 Stacy Woodward
 Yeh Yeh's Vietnamese Sandwich Shop
 Kari Ann & Kevin Yokoyama

In-Kind Donations

Thank you to the following donors for providing in-kind gifts of items and/or services to NW Children's Fund.

Janice Alford
 Leann Ashford
 Balloon Splendor
 Bear Creek Florist
 Laura Boyle
 Camille's Dance Edge in
 Lynnwood & the Starlettes
 Performing Music
 The Coats
 Crystal Springs Water
 Girl Scout Troop #44263
 GlassyBaby
 Randy Halberstadt
 Beverly Heising
 Cathy Hofferber
 John Howie & Seastar Restaurant
 and Raw Bar
 Jim Kirkish & The Shuttered
 Image
 Amy Knapp
 Netty Latham
 Chris McClure & Better by Design
 Embroidery
 Panera Catering
 Redbox
 Theo Chocolates
 Jim Timmer & West Coast Plants
 Trader Joe's
 Danny Westneat

Endowment Donors

Thank you to the following contributors to our endowment fund for their generous donations in the last year:

Daniel Dex & Geoff Hall
 Mary & Peter Kerr
 Jeanie Ketcham

The following individuals have made contributions to the Mary Ketcham Kerr Endowment Fund since its inception:

Cory Carlson & Rhoda Altom
 Anonymous (2)
 Hall & Dorothy Baetz

Roger Bass
 Carolyn Corvi & John Bates
 Beth Billington
 Matt & Judy Bloom
 Bottler Charitable Trust
 Steve & Linda Brown
 Mark & Lisa Caputo
 Hugh & Nicole Chang
 Jeff & Janeé Christianson
 Ann Lokey & Mark Clausen
 Joel & Diane Cowger
 Stephen Romein & Ty Cramer
 Deborah B. Cushing
 Daniel Dex & Geoff Hall
 Yenii & John Dex
 Julie & Robert Dreyfoos
 Beth & Marc Droppert
 Alden M. Garrett &
 Charlie C. Eriksen
 Sally Ketcham & Alyx Fier
 Savitha & Scott Finch
 Bobby & Edith Forch
 Anne & Jon Fox
 Alicia & Adam Gold

Christine Lamson & Patrick Gordon
 Michelle & Glenn Halstead
 Christine & Henry Happel
 Christopher &
 Victoria Peattie Helm
 Doxie Hogue
 Albert & Karen Hogue
 James & Marilyn Hogue
 Lawrence Hogue
 Robert Homchick
 Charles & Catherine Huffman
 William & Marlene Jenkins
 Daniel & Elaine Johnson
 Betty Jones, PhD
 Dave & Deborah Jones
 Erik & Julie Jorgensen
 Judith Wright Design
 Mary & Peter Kerr
 Frank & Patricia Kerr
 Jeanie Ketcham
 Henry H. & Nancy K. Ketcham
 Foundation
 Terri & Doug Kimball
 Wiley & Marianne Kitchell

Don & Carla Lewis
 Brian & Marianne Lewis
 Rob & Gina Maguire
 Alisa Martinez
 Scott & Shelley McIntyre
 Andrew & Valerie Meyers
 Patti & Mike Meyers
 Microsoft Matching Gifts Program
 Stanley & Betsy Minor
 James & Lori Leff Mueller
 Heidi Stamm & Thomas Mueller
 Todd & Mary Nelp
 Mary & Tim Nelson
 Brian & Cindy Nelson
 Chuck Nordhoff
 Mark & Leslie Olson
 Dick & Patsy Pattison
 Paul & Barbara Pearson
 Scott & Heidi Peiper
 Monica Butler & M. Peter Phillely
 Howard Phillips
 Sasha & Lowell Press
 Mala & Suri Raman
 David & Valerie Robinson

Scot & Cody Rogers
 Jan & Walter Rotkis
 Kristi Nilson & Pat Sanford
 Bob Sawin
 Lisa Kjaer-Schade & Scott Schade
 Seattle Foundation
 Judith & Bob Sentz
 Roger & Cari Shanafelt
 Dave & Liz Silke
 Patricia Lee & John Smith
 Chelsea Stanton
 Kevin & Tina Steiner
 Bob & Katie Strong
 The Seattle Foundation
 Caryn Buck & Andy Thomas
 Sue Reichert & Robert Thomas
 Andrew & Barbara Turner
 John & Marka Jenkins Waechter
 Carol & Jess Webster
 Kathryn & David Williams
 Mrs. Virginia Bloedel Wright
 Paul & Susie Wyckoff
 WYCO Fund
 Christine Yokan

2013 NW Children's Fund Gala Sponsors



Presenting Sponsor

Isola Homes

Benefactors

The Boeing Company
RPX Research Inc.

Leaders

Columbia Bank
Runde & Co. LLC

Patrons

Northwest Center for Aesthetic
Plastic Surgery
Promium
Sheldon Manufacturing, Inc.

Premier Table Sponsor

Pacific Wealth Management Group
at Morgan Stanley

Premier Wine Sponsors

Elevation Cellars
Fidélitas
Northwest Totem Cellars

Design, Print & Video Sponsors

B47 Agency
Compact Information Systems
Outlier Solutions
United Reprographics

Thanks to our
Corporate Sponsors,
100% of individual
donors' contributions
directly support
children and families
in need!

2013 NW Children's Fund Golf Classic Sponsors

Presenting Sponsor

F5 Networks, Inc.

Premier Event Sponsors

Rosen Lewis, PLLC
Trilogy Partnership
Wilson Sonsini Goodrich & Rosati
Foundation

Contest Sponsors

John Howie Restaurants
Preg O'Donnell & Gillett

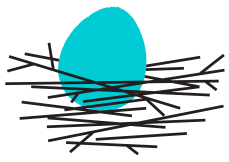
Hole Sponsorships & Special Recognitions

American Seafoods Group LLC
Mark & Sue Anderson
AON Risk Services
Jeff & Janeé Christianson
Corr Cronin Michelson Baumgardner &
Preece LLP
DLA Piper
Frommer, Lawrence & Haug
FTI Consulting
Graham & Dunn
Gregg Rogers' Golf Performance Centers
K&L Gates
Jim Kirkish
Koehler & Company
Kovarus, Inc.
LeClairRyan
Pacific Wealth Management Group at
Morgan Stanley
Perkins Coie
Scot & Cody Rogers
Servco Foundation
Tacoma Rainiers
Washington Partners, Inc.



Print Sponsor

Superior Imaging Group



NW
CHILDREN'S
FUND

Making hope work.

2100 24th Ave. S.
Suite No. 320
Seattle, WA 98144

Non-Profit Org.
U.S. Postage
PAID
Seattle, WA
Permit No. 2135

Help us make an
eco-friendly move to
electronic news.

Send your email address to
info@nwcf.org

You're invited to

Girls' Night Out at Molbak's

Thursday, November 14 | 7-9:30pm | Benefiting NW Children's Fund

Molbak's Garden + Home | 13625 NE 175th St | Woodinville, WA 98072

*Gather up your girlfriends and join us for a fabulous night of shopping, laughter and fun.
This festive event has become a can't-miss holiday tradition for many, so tickets sell out fast.
Reserve your spot today!*

- \$20 per ticket (Proceeds benefit NW Children's Fund)
- Save 10% storewide.*
- Fun door prizes, festive holiday how-tos and more!
- Register now at www.molbaks.com/GNO2013.html

molbak's
garden+home

* Offer valid 11/14/2013, 7-9:30pm only. Not valid on tickets, special orders, gift cards or prior purchases.
Cannot be combined with other offers or discounts.

