



NW
CHILDREN'S
FUND

Making hope work.

2100 24th Ave. S.
Suite No. 320
Seattle, WA 98144

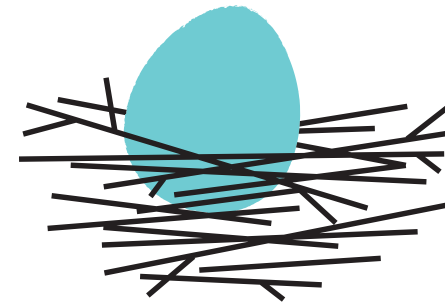
Annual Auction & Gala

Saturday
May 7, 2011

Fremont Studios, Seattle

Save The Date!

Non-Profit Org.
U.S. Postage
PAID
Seattle, WA
Permit No. 2135



NW
CHILDREN'S
FUND

Making hope work.

FALL 2010 / ANNUAL REPORT

IN THIS ISSUE



01	Protecting the Fragile: reports from the front lines	06	NW Children's Fund Donors for Year Ending July 31, 2010
02	Letter From the Co-Presidents	11	Annual Golf Classic
03	Year In Review	11	25th Anniversary Gala
04	NW Children's Fund 2010 Grant Recipients		



100%

...of children deserve a healthy, safe childhood.

...of your individual donation goes directly to fighting child abuse and neglect.

nwcf.org



Protecting the Fragile: reports from the front lines

Recently, NW Children's Fund surveyed the organizations it supports to gather essential feedback and measure the growing impact NW Children's Fund has on our region's child welfare landscape. The results were inspiring.

In 2008 alone, NW Children's Fund's grants enabled organizations to make a positive change in the lives of over 75,000 children and families. In our first quarter century, NW Children's Fund has funded over 300 effective programs, providing essential support to agencies that now serve well over 1.3 million in our area each year. None of this would have been possible without your generous support.

The survey went beyond numbers, asking organizations to share their impressions of NW Children's Fund—our role in the community, the significance of our grants to their organization, and stories about how NW Children's Fund had helped touch the life of a child.

Here are just a handful of the responses we received:

"NW Children's Fund changes lives of the most vulnerable and most hopeful segment of our society, our children. Children are strong and resilient if they are provided with the resources and support they need to thrive. NW Children's Fund provides resources that allow nonprofit organizations to share their expertise and together, we provide healing for children at their time of greatest need."

Miriam Barnett Executive Director, YWCA Pierce County

"Over the years, NW Children's Fund has kept its eye on its most important goal—ensuring that every child in Washington has an opportunity to grow up happy, healthy and loved."

Jack Edgerton Executive Director, Parent Trust for Washington Children

Photo courtesy Atlantic Street Center



"NW Children's Fund Board members take the time to deeply research and understand the organizations they fund. For those of us in the non-profit world, this is an enormous gift."

Janis Avery Executive Director, Treehouse

If you've ever doubted the impact of your donations, we invite you to read through more of the stories and impressions at nwcf.org.

We thank our grant recipients for the amazing work they do, and for sharing their invaluable feedback with us. And we thank our donors for making a real, measurable difference in the lives of thousands of Northwest children and families.



Co-Presidents Yenii Dex and Nicole Chang
Photo Credit Wenona S. Strafford

Letter from the Co-Presidents

Dear Friends,

What an exciting time for NW Children's Fund! We begin the new 2010–11 fiscal year with a new logo and tagline and a new model of leadership for our board. For the first time, the NW Children's Fund Board is headed by co-presidents. Together we have over 15 years of NW Children's Fund Board experience. By sharing the responsibilities of this office, we seek to provide added support to Board activities and to the office staff.

As we close out a stellar 25th anniversary year, we embark on yet another pivotal event in NW Children's Fund's history—launching our new brand. The egg and nest graphic is our way of visually articulating the joining of agency partners and donors to create the support network for the most vulnerable children in our community. The new tagline tells our story in three simple words: Making hope work.

NW Children's Fund's success is made possible by our incredible community of generous donors and dedicated supporters. We look forward to our continued collaboration with each of you.

Best regards,

Yenii Chen Dex
Nicole Mortati Chang
Co-Presidents, NW Children's Fund Board

An enormous “thank you!” to Turnstyle—who donated all strategic design services in our new logo and branding work—and to copywriter Leah Idler, photographer Kerry Carty, website developer 4-Mile Production, and branding consultant Jane Davis Consulting, who donated their talents and expertise.

Our Mission / Vision / Key Strategic Areas

MISSION /

To end the cycle of child abuse and neglect by supporting programs for at-risk children and their families.

VISION /

To be the most effective funder of private contributions to child welfare in Western Washington.

KEY STRATEGIC AREAS / Fundraising

As a vital vehicle for community investment in child welfare, NW Children's Fund will aim to increase our grant distributions each year through growth in donor contributions.

Grantmaking

Through a discriminating grant review process, ongoing board education, and incorporation of best practices and available research on child welfare, NW Children's Fund will strive for ever-improving effectiveness in grantmaking.

Organizational Development

NW Children's Fund will seek to recruit, educate and retain compassionate board members and employees of the highest quality, in order to achieve greater impact through fun and engaged teamwork.

Stewardship

Through efficient allocation of funds, complete and accurate reporting, and conscientious application of governance policies, NW Children's Fund will work to remain a community leader in financial stewardship.

Awareness

NW Children's Fund will commit to increasing awareness of child welfare issues and solutions in our community, and of NW Children's Fund's role in funding solutions.

NW
CHILDREN'S
FUND

2100 24th Ave. S.
Suite No. 320
Seattle, WA 98144

T 206 682 8447
F 206 682 8173
nwcf.org

Executive Director
Victoria Peattie Helm

Co-Presidents
Nicole Mortati Chang
Yenii Chen Dex

Vice President
Patricia Lee Smith

Treasurer
Lori Leff Mueller

Secretary
Lisa Kjaer-Schade

Board Members
Charles Billington
Diane Bowlin
Sandy Cocanour
Debra D. Dahlen
Jane Davis
Jim Deboo
Monica Fix
Robert Fries
Alicia Hall Gold
Randi Hedin
Julie Jorgensen
Rob Maguire
Mary Fellows Nelson
John Poli
Michelle Raymond
Valerie Robinson
Scot Rogers
Wenona S. Strafford
Lynn Thorburn
Barbara Turner
Heidi Vanderlaan

Chair, Advisory Council
Mary Ketcham Kerr

Tax ID 91-1314318

Paper donated by
Spicers Paper, Inc.

Letter from the Executive Director

October 2010

Dear Friends,

What a celebration our 25th anniversary year turned out to be! While the economy remained difficult, thanks to your unwavering commitment to children, our financial results for the year ending July 31, 2010 held some very bright stars:

- NW Children's Fund was able to **distribute over \$826,750 in grants** to powerful programs for at-risk children and families;
- Our 25th Anniversary Gala was our **most successful fundraiser in our history**, netting over \$445,000 and enabling us to distribute **more grant dollars in our spring grant cycle than ever before**;
- Because our Board members and corporate sponsors covered all of NW Children's Fund's operating expenses, **every dollar contributed by individual donors went directly to grants.**

Thank you for the trust you place in us to invest your contributions wisely. We invite you to turn the page and read about the critical programs you invested in this year that transformed thousands of young lives.

Respectfully,

Victoria Peattie Helm
Executive Director, NW Children's Fund

NW Children's Fund's Sources and Uses of Funds

Fiscal Year Ending July 31, 2010

Sources

Private Donations*	\$497,000
Special Events (net of cost of goods sold)	\$509,350
Other	\$984
Excess Reserves from FYE 09**	\$3,757
	\$1,011,091

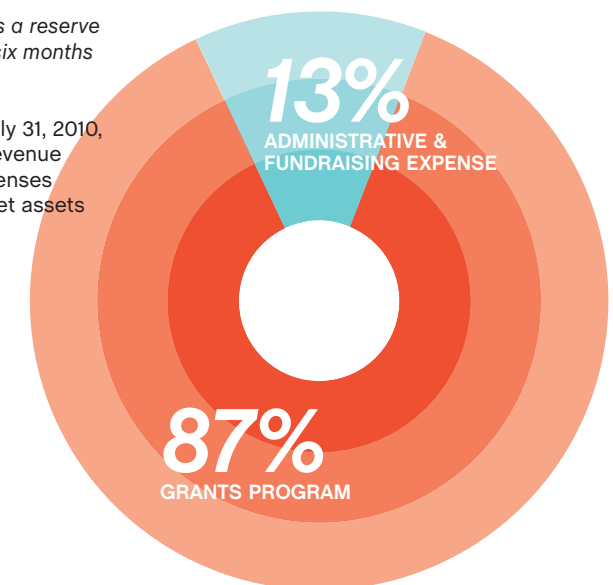
Uses

Grants Program	\$879,136
Administrative & Fundraising Expense	\$131,955
	\$1,011,091

* In addition to the donations above, NW Children's Fund received donations of \$73,666 to the Mary Ketcham Kerr Endowment, which had reached a total value of \$716,522 at the end of the fiscal year.

** NW Children's Fund maintains a reserve equivalent to approximately six months of its operating expenses.

For the fiscal year ending July 31, 2010, NW Children's Fund's total revenue was \$1,135,659, program expenses were \$879,136, and ending net assets were \$812,420.



**NW
CHILDREN'S
FUND**
2010 Grant Recipients

Agency / Program Description	Grant (\$)	Agency / Program Description	Grant (\$)
Healing Abused Children		The Mockingbird Society / Foster care system development through youth leadership, legislative advocacy, and extended-family model for foster care.	11,000
Amara / Parenting and adoption services to create safety and permanence for at-risk and special-needs children.	30,000	World Association for Children and Parents / Support and advocacy for Puget Sound children waiting in State care and who face significant barriers to adoption.	2,500
Bethany Christian Services / Post-adoption support services to adopted children and their families.	7,900	Youth Eastside Services / Comprehensive counseling and treatment programs for children and families dealing with substance abuse, sexual abuse, violence, teen parenting and family conflict.	6,900
Childhaven / Crisis nursery and therapeutic childcare for abused, neglected and/or drug-affected children.	6,500		
City of Seattle, Human Services Department / Pilot with YouthCare for Residential Recovery Program for Prostituted Children.	22,500	Helping At-Risk Youth	
Domestic Violence & Sexual Assault Services / Support services and advocacy for victims of domestic violence and sexual assault in Whatcom County.	5,600	Big Brothers/Sisters of Snohomish County / Volunteer matching & parenting support program that creates and monitors safe, nurturing relationships between adults and children aged 6-18.	19,000
Families Like Ours / Respite Project providing peer-to-peer respite support services.	6,500	Big Brothers/Sisters of Southwest Washington / One-on-one professionally supported mentoring for at-risk youth in southwest Washington.	15,000
Family Law CASA / Representation and advocacy for children in custody cases involving allegations of abuse and neglect.	9,200	Center for Human Services / Supports at-risk youth to strengthen skills and assets for positive social development and make progress toward educational goals.	10,000
Hopesparks / Art and play therapy for children who have been abused physically, sexually or emotionally in Pierce County.	9,600	Communities in Schools of Orting / School-based mentoring, enrichment, and outreach programs for youth at high risk of school failure in Orting.	14,000
Jumping Mouse Children's Center / Long-term, intensive play therapy and social advocacy for neglected and abused children.	30,000	FareStart / Comprehensive job training for homeless and at-risk youth.	6,000
Kindering Center / Early intervention services to meet the needs of children 0-6 in foster care.	8,000	Friends of the Children / Long-term, early intervention mentoring program for at-risk children in greater Seattle.	10,000
King County Sexual Assault Resource Center / Dando Voz Program: Support services for Spanish-speaking children and families in South King County who have suffered from sexual assault or child abuse.	10,000	Friends of Youth / Integrated treatment and therapeutic services for youth and young adults transitioning from homelessness.	6,500
Lutheran Community Services Northwest / Permanency planning and case management for foster children and their families.	16,500	Girl Scouts of Western Washington / Fostering a Future Program: Provides girls living in foster care weekly peer-group meetings that support skill-building, healthy relationships, and a successful transition to adulthood.	20,000
Northwest Adoption Exchange / Recruitment program specializing in adoptive parent recruiting for foster children in Washington State with special needs.	10,200	Island County Readiness to Learn / Integrated support for homeless families through community and school-based programs.	12,000
Northwest Immigrant Rights Project / Critical legal services and advocacy for abused, abandoned, and undocumented immigrant children.	10,200	Jefferson Teen Center / Provide TriArea disadvantaged youth with a safe tutoring and learning center.	5,000
Pediatric Interim Care Center / Intensive, specialized care for drug-exposed newborn infants.	19,000	Peace for the Streets by Kids from the Streets / Support and services for homeless youth and young adults in Seattle.	25,000
Ryther Child Center / Residential, outpatient and prevention program for severely abused and/or neglected children.	16,500	Red Eagle Soaring / Empowering Native American youth through dramatic arts training and traditional Native American cultural skills.	6,500
SafePlace / Integrated, wrap-around services for victims of domestic violence.	12,500	ROOTS / Services providing a continuum of care for homeless young adults ages 18-25 in Seattle's University District.	5,000
Secret Harbor / Programs to support the growth and success of children and youth who have a combination of behavioral, social, and developmental challenges.	9,200	SafeFutures Youth Center / Comprehensive services for youth development and violence prevention.	15,000
Sound Mental Health / Specialized counseling services to help children and their supportive parents recover from domestic violence.	10,000	Seattle Children's Home / Programs helping children and families learn to manage mental health.	10,000

Agency / Program Description	Grant (\$)	Agency / Program Description	Grant (\$)
Seattle Education Access / Support services and programming that helps marginalized youth make strong transitions to local community colleges.	8,000	HomeStep / Intensive case management and transitional housing for homeless, single-parent families.	10,000
Treehouse / In-school and after-school tutoring and intensive academic support for foster children in King County.	10,000	Housing Hope / Therapeutic programming to help homeless and at-risk families overcome the barriers to age-appropriate child development for their children.	8,050
University District Youth Center - CCS / Continuum of critical services for homeless, at-risk, runaway and/or street-involved youth ages 13-22.	5,000	Navos / Intensive services to help children and parents/caregivers develop secure attachments, and intervention for children with emotional and mental health issues.	10,000
University Street Ministry / Case management and services for homeless street youth ages 13-25.	7,000	Our Sisters' House / Program for at-risk teens who have initiated violence at home and/or school, and their parents, in Tacoma-Pierce County.	5,000
Youth Tutoring Program - CCS / After-school tutoring and enrichment program for kids living in five Seattle low-income public housing communities.	10,000	Parent Trust for Washington Children / Support and education services for at-risk families through every stage of a child's life.	30,000
YouthCare / Emergency shelter and programs for homeless adolescents.	12,000	Rochester Organization of Families (ROOF) / Resources and services for children, youth and families to achieve a healthy, positive and drug-free community in the Rochester area.	15,000
Supporting Fragile Families		Shared Housing Services / Transitional housing and case management for homeless or at-risk families with post-program support.	4,000
Atlantic Street Center / Child and youth development, family support and professional mental health counseling to help families raise healthy successful children and youth.	15,000	Solid Ground / Funding for Broadview Emergency Shelter and Transitional Housing Program, a safe haven for women with children escaping domestic violence.	12,000
Boys & Girls Clubs of King County / After-school program designed to combat generational poverty at the Renton/Skyway Club.	6,000	The Interfaith Association of Northwest Washington / Transitional housing, support and case management services for homeless families in crisis.	28,000
Catalyst for Kids / Parent Engagement Program: Training for parents who are veterans of the child welfare system to serve as mentors and advocates for parents entering the system.	10,000	Toddler Learning Center / Delivers education services and therapy in the home for children and families with intensive medical, mental or social risk factors.	8,500
Child Care Resources / Comprehensive child care services for homeless children and support for their families.	5,000	Vashon Youth and Family Services / Community-based family support and child abuse prevention program that promotes development of social, emotional, and cognitive skills of young children.	7,500
Cocoon House / Parenting and adoption services to create safety and permanence for at-risk and special-needs children.	6,900	Vine Maple Place / Transitional housing, case management and child advocacy for homeless single parents and their children.	5,000
Deaconess Children's Services / Teen Parent Program: Parent education, child development assessments, and case management for underserved teen parents with children aged newborn to five.	5,000	Wellspring Family Services / Practical resources and therapeutic support to help fragile families become more resilient.	10,000
Divine Alternatives for Dads / Comprehensive support services and counseling for fathers after incarceration or absence.	12,000	YWCA Pierce County / Legal assistance for family members who are victims of domestic violence.	14,000
Domestic Abuse Women's Network / Services for women and children who have experienced domestic violence.	30,000		
Encompass / Evidence-based parenting program to repair, nurture and strengthen the parent-child relationship.	7,500		
Family Education & Support Services / Home-visitation outreach for high-risk pregnant women and parents with newborns in Mason and Thurston Counties.	10,000		
Healthy Start / Provides critical parenting education, mentoring and support for high-risk families.	22,000		
Healthy Start Kitsap / Home visits by nurses to improve the health, safety and well-being of at-risk new parents and their infants.	13,000		

\$826,750
AWARDED

NW Children's Fund gratefully acknowledges the generosity of all our donors—individuals, foundations and corporations—for gifts made during the fiscal year ending July 31, 2010.

2010 GOLF CLASSIC

Presenting Sponsor

F5 Networks

Contest Sponsor

Wilson Sonsini Goodrich & Rosati

Hole Sponsors & Special Recognition

Accuvant
American Seafoods Group LLC
AON Risk Services
Davis Wright Tremaine LLP
Fenwick & West
Frommer Lawrence & Haug
Futurity First Insurance Group
Integrated Archive Systems
Jeff & Janeé Christianson
K & L Gates
Koehler & Company
KPMG
KJR Radio
Mark Anderson & Family
Morgan Stanley Smith Barney
Pacific Wealth Management Group
Opanga Networks, Inc.
Perkins Coie LLP
Preg O'Donnell & Gillett
Rosen Lewis, PLLC
RR Donnelley
Stafford Frey Cooper
Glenn Sumida & Family
TechPower
Trilogy Partnership
Washington Dental Service
Washington Partners, Inc.
WTAS

2010 SILVER ANNIVERSARY GALA

Benefactors

The Boeing Company
Flying Spot Entertainment
Fremont Studios

Leaders

Columbia Bank
Davis Wright Tremaine LLP
KPMG
Runde & Co. LLC
Seattle Foundation
Wells Fargo

Design and Print Sponsors

Compact Information Systems
Vulcan Real Estate
Gina Tolentino
Washington Graphics

Premier Wine Sponsors

Brian Carter Cellars
Fidélitas Wines
Northwest Totem Cellars
Reininger Winery

*Thanks to our Corporate Sponsors,
100% of individual donors'
contributions directly support
children and families in need.*

The list below includes donors of monetary gifts to NW Children's Fund, including amounts paid in excess of fair market value at our annual auction. Endowment contributions and donations of auction items are recognized separately in the following pages.

Leadership Circle \$25,000+

John Stanton & Theresa Gillespie
Moccasin Lake Foundation
David & Valerie Robinson
Williams Trading, LLC

Founder's Circle \$10,000–\$24,999

Anonymous (3)
Theodore R. Aronson
Steve & Connie Ballmer
Hugh & Nicole Chang
Jeff & Janeé Christianson
F5 Networks
Randi Hedin & Andrew Gardner
Jim & Diana Judson
Mary & Peter Kerr
Mrs. Henry H. Ketcham
Maveron LLC
Patti & Mike Meyers
Tom Miller & Terri Olson Miller

Benefactor \$5,000–\$9,999

Anonymous
Sid & Shelley Andrews
Blossom Benefit
Trisa & Christian Clemons
Robert Fries & Debra Dahlen
Jim & Jan Dwyer
William & Marlene Jenkins
Matthew & Barbara LePage
Joseph & Cathy Linn
David & JoAnn Marshall
Craig McKibben & Sarah Merner
Ms. Hilary Peattie
Monica Butler & M. Peter Phillely
Scot & Cody Rogers
Steven & Kathleen Smith
Kevin & Tina Steiner
Dennis & Jeanne Trittin
Andrew & Barbara Turner

Contributor \$2,500–\$4,999

Anonymous
Aon Risk Services
Matt & Judy Bloom
The Boeing Company
Diane & David Bowlin
Brad & Judy Chase
Ann Lokey & Mark Clausen
Stephen Romein & Ty Cramer
Davis Wright Tremaine LLP
Yenii & John Dex
Monica Fix
Scott & Nancy Gulick
H.D. Fowler Company
Jeff & Candy Havens
IFMA Greater Seattle Chapter
Erik & Julie Jorgensen
KPMG LLP
John Parchem & Barbara Lycett
Rob & Gina Maguire
Scott & Shelley McIntyre
Jim & Lori Leff Mueller
Todd & Mary Nelp
Tim & Mary Fellows Nelson
John & Paula Orehek
Scott & Heidi Peiper
Runde & Co. LLC
John & Patricia Lee Smith
Karen & Richard Tait
The Seattle Foundation
Caryn Buck & Andy Thomas
Paul & Susie Wyckoff
Xtreme Consulting Group, Inc.

Supporter \$1,500–\$2,499

Betsy & Steve Amento
American Seafoods Group LLC
Mark & Susan Anderson
Gary Blackburn
Bowne & Co., Inc.
Boyd & Lisa Brown
Columbia Bank
Terry & Manuela Crowley
Deborah B. Cushing
Jane & Alan Davis
Jim & Paula Deboo
Lindsay Eberts & Patti Paxton-Eberts
Sally Ketcham & Alyx Fier
Futurity First Insurance Group
Kathryn Alvord Gerlich
Alicia & Adam Gold
Randy & Chris Halberstadt
Frederick & Catherine Hayes
Christopher & Victoria Peattie Helm
Andy & Molly Hill
Isobel & Loren Hostek
Denise & Al Hurley
Kibble & Prentice, A USI Company
Koehler & Company
Ted & Pam Kummert

Lance & Linda Lamprecht
Christine Bellas & Quinn Loucks
Timothy Manry
Cheryl L. Buck & Susie Miller
Jeff & Colette Nelson
Charlie & Patti Nelson
Frances Gmur & Andy Osman
John & Christine Poli
Bob Power & Michelle Raymond
Redapt Systems, Inc.
Kathy Reid
Paul & Laura Reynolds
Rosen Lewis, PLLC
Lisa Kjaer-Schade & Scott Schade
Elizabeth & Tracy Steig
Glenn & Karen Sumida
The Dex Family Foundation
The Overlake School
Lilia & Doug Taylor
Sue Reichert & Robert Thomas
Mikal & Lynn Thomsen
Trilogy Partnership
Anders & Anki Vinberg
Washington Dental Service
Washington Partners, Inc.
Wells Fargo
Kathryn & David Williams
Sharon & Wayne Wisehart
WTAS LLC

Friend \$1,000–\$1,499

Chap & Eve Alvord
Pam & Don Avriett
Carolyn Corvi & John Bates
Greg & Melissa Bennett
Bottler Charitable Trust
Bruce & Sherry Carbary
Eric & Tenley Cederstrand
Scot & Sandy Cocanour
Code Blue Communications, Inc.
Commencement Bay Development, LLC
Patricia Orellana & Michael Coulson
David & Kim Dawson
Denny & Katie Driscoll
RaeAnn & Doug Duim
Savitha & Scott Finch
Mary Fjelstad
Hod & Stephanie Fowler
Michael & Beverly Freeman
Ed & Kathy Fries
Jim & Marilyn Fries
Mark Pendergrast & Laura Garcia
Wayne & Anne Gittinger
Blake & Nicole Goldberg
Mike & Linda Grady
Don Guthrie
Daniel Dex & Geoff Hall
Kayreen Handley
Ms. Catherine Heide
Robert Homchick
David Thompson & Judy Jesiolowski
Larry Underdahl & Pam Jungaro
John Balciunas & Arleen Kearns
Melissa Ries & Pat Kennedy
Mr. George B. Kiddell
Carolyn & Bob Kitchell
Amy & Eric Knapp

Dawn Dort & Ian Lurie
Lex Lindsey & Lynn Manley
Jim & Casey Margard
Mr. John Matthews
Morningside Foundation
Terry & Susan Moss
Kim & David Nagle
Amy & Dan Nordstrom
Tim & Mary Ord
Robert Overhus
Dick & Patsy Pattison
Amy Parivar & Eric LePage
Joseph & Nancy Pearl
Louis & Cheryl Perazzoli
Mark & Cindy Pigott
Mary Pigott
Mark Flippo & Elise Purcell
Mala & Suri Raman
Bob & Peggy Rinne
David Rothenberg
John Rudolf
Sea Con LLC
Judith & Bob Sentz
Brett & Larisa Sheckler
John & Dawn Siegel
Alee & Bill Spencer
Brereton & Wenona Strafford
Van & Nancy Strom
Bob & Katie Strong
Hal & Ann Strong
The Moraine Foundation
Don Verfurth
John Vert
Josh Brothers & Jennifer Vinz
Heidi Schumann & Owen Walters
Cooper Werner

\$750–\$999

Anonymous (2)
Lynly Beard
Tracy R. Bennett
John & Bess Billington
Eric Dahlen
Tula Holmes
George Hubman
Keith Laepple
Wenzel & Julianne Leff
Don & Carla Lewis
Lisa & Peter Lindburg
National Association of Residential Property Managers, King Co. Chapter
Romac Industries Inc.
Ms. Judith Tucker
Kevin Ward & Jill Maguire-Ward

\$500–\$749

Anonymous (3)
Janice & Dave Alford
Rob Angel
Hall & Dorothy Baetz
Ballyshannon Partners, LP
Edmund Belsheim Jr.
Ronald L. Berenstein
Charles & Tracy Billington
Fraser & Deirdre Black
Mary & Kurt Bray
Steve & Linda Brown
Bryan & Terry Caditz
Celebrated Chefs
Rennie & Alison Coit
William Crittenden

Jennifer & Will Daugherty
Mr. William Davis
Charley Dickey & Sheila Wyckoff-Dickey
Doug & Jeri Donnelly
Jonathan Drachman & Paula Lozano-Drachman
Jennifer Dressing
Mary & Jim Dunnam
Rob Fairweather
Fenwick & West LLP
First Place
Kathy & Steve Gano
Marty Brenttrott & Candace Gargiulo
Carlene Gaudette
Kelly & Peter Grace
Kevin & Mary Grambush
John & Lissa Leff Griffith
David Hallowell
Stan & Mary Harrelson
Pam Bekins & Hamilton Hazlehurst
Danita & David Herbig
Pete Higgins & Leslie Magid Higgins
Greg & Lisa Hitchcock
Suzanne M. Hittman
Leslie Wang & Joe Howard
William & Ann Jenkins
Larry & Katy Jensen
K & L Gates, LLP
Jeanie Ketcham
Matt King
Wiley & Marianne Kitchell
Therese & Reid Kuhn
Colt Boehme & Jackie LePage
Kate & Tom Lepp
Joanie Warner & Bob Mahler
Mark Muzi & Laurie Boehme
Rich & Candy Mathes
Joseph & Teri Matz
Jacqueline McGlynn
Helen Naini
Helen & Nicholas Newhard
Mark & Leslie Olson
Ann & Ed Owens
Perkins Coie
Sheryl Peterson
Steve & Sue Petitpas
Tamara & Don Philip
Sasha & Lowell Press
Kathy Smith & Michael Radcliff
Rich Johnson & May Reed
Erin F. Rice
Steve Rimmer
Nancy Robinson
Dave & Patricia Ross
Katie & Patrick Rossman
Amy & Matt Rudolf
James & Susan Rupp
Joseph & Midori Sacotte
Mrs. Jorge Garcia & Barbara Schinzing
Oliver & Coleen Schneider
Norman & Patricia Scott
Jiff & Jane Searing
Seattle Children's Home
Roger & Cari Shanafelt
Alison & Barry Shaw
Scott & Wendy Soley
Stafford Frey Cooper
Stephanie Mulvey & Chris Browne
Trevor & Marti Stuart
Craig & Mari Swanson

Gary & Darcia Tudor
Steve & Karen Van Til
Liz Engelhardt & Tom Vaughan
Nohl Martin & Stephen Vella
Marka Jenkins & John Waechter
Gary & Jenny Walden
Allen & Betsy Webb
Marian Webster
Wellspring Family Services
Priscilla & Timothy Wiest
Nobuko Wiles
Pat & Lori Wiley

\$250–\$499

Anonymous (2)
Mr. & Mrs. Don G. Abel
Chris Goelz & Joanne Abelson
Sandra Allen
Ellen & Doug Allen
Edward W. Andrews III
Charlie & Maura Ball
Leslie & Peter Bateman
Peter & Leslie Benoit
Katheryn Bradley & Gilbert Blankinship
Mark Dijulio & Debbie Blethen
Bruce & Ann Blume
Barb & Lee Bodker
Adele Brady Bolson CPA PS
Andrew & Brenda Bor
Rosemary & Michael Boyle
Peo Gudmundsson & Alan Brown
Dr. & Mrs. Charles Buck
Cristin Burris
C James Judson, Inc., PS
Laura & Shawn Cantrell
Robert Carlile
Jeff Barstow & Melanie Chang-Barstow
Chang-Hsu Chen
Muffie & Bob Cohen
Bob Davis & Laura Corvi
Gemma Daggatt
Bruce Dankberg
Mike & Laura Delman
Brian & Linda Deutsch
Walter & Ruth Dex
Richard & Sandy Dochnahl
Jacob & Britt Domer
Beth & Marc Droppert
Alden M. Garrett & Charlie C. Eriksen
Brad Miner & Sharon Evans
Greg & Kathe Fowler
Stefanie & Scott Frank
Alan & Mary Frazier
Don Galvanin
Heather Gilroy
David & Christine Ginsberg
Julie Goldman
Graham & Wood Graham
Mark & Maggie Graham
Clare Meeker & Dan Grausz
Mr. Lee Grogg
Maria Hall
Rolf & Lynne Hansen
William & Margaret Hendrickson
Jim & Kristin Horgdal
Ray Heacox & Cynthia Huffman
Leah Idler
Cynthia Riccardi & John Jerin
Natanya Bednarski & Gregory Johnson
Dave & Deborah Jones

Barry & Erica Kaplan
Mark & Wendy Kettering
Stacey Krum
Christiane Laakmann
Sin S. Lew
Bill & Suzanne Lindberg
Mike Brown & Martha Lunbeck
John Davis & Kathleen MacFerran
Judy Marczewski
Barbara & Jim Marowitz
Alisa Martinez
Mike Rogan & Cindy Marum
Phillip & Tamara McConnell
Marilyn & Michael Kelch McIntyre
Janet Mead
Livingston Wernecke & Gardis Meergans
Dale Miller
Anne & Shirish Mulherkar
TE & Judy Mullane
Mr. & Mrs. Stuart Newmark
Jeffrey Keane & Martha Noerr
Darla & James Norris
Peter & Mari Offenbecher
Johanna & Tom Padilla
Annie & Greg Pearson
Paul & Barbara Pearson
Shane & Deveaux Philpot
Kathy Porterfield
Promium
Sean Bleck & Denise Read
Pamela Rhodes
Carla Murray & Tom Robinson
Mr. & Mrs. Frazier Rogers
Debra Ronnholm
Wendy & Adam Rosen
Matt Griffin & Evelyne Rozner
Heather Kroll & Kevin Ruddell
David Sales, Ltd.
Karen Saunders
Stuart & Anne Schaefer
Jennifer & Bryan Schielke
Dara Schmidt
Robert & Kerri Schroeder
Wim & Phyllis Schut
Blake & Julie Sedlacek
Kathleen Sesnon
Julie Kay Sheldon
Noreen & Lawrence Siao
Andrea Solomon
Ruth Perlman & Jeffrey Stofsky
Steve & Liann Sundquist
George & Ginny Thomas
Dave Hancock & Lynn Thorburn
Christina Olson & Devon Uderitz
Karl & Julie Voss
David & Natasha Wallis
Mr. Norman V. Welter
Brian & Sonja Whitaker
Mrs. Virginia Bloedel Wright
David E. & Linda Wyman
Christine Yokan

\$100–\$249

Anonymous (7)
Noreen & Jason Abley
Active Construction Inc.
Christine & Thomas Addison
Leslie Helm & Marie Anchorodoguy
Barbara Anderson
Howard Goodfriend & Helen Anderson

Larry & Lisa Aronovitz
Gary & Mitzi Aspri
Peter & Sandy Atkins
Elizabeth Bacher
Jennifer Bartlett
Wayne & Gladys Bath
Michele Bayle
Elizabeth Bazley
Ann & Paul Beame
Martha & Jim Beattie
Michael & Tanya Bell
Beth Billington
Alan & Sarah Black
Mr. & Mrs. William M. Black
William & Sydney Buckley Blank
William J. Bodker
Les & Patty Boudwin
Don & Joan Bowzer
Steve & Kathy Bremner
Mary & Jerry Brennan
David Brereton
Michael & Lora Bunch
Tove & Michael Burrows
C.A. Carey Corporation
CADC
John Campa
Anne & Jim Carden
Stanley & Susan Carlson
Ross & Julie Case
Dr. Don Shifrin &
Ms. Bobbi Chamberlin
Childhaven
Chris Vick & Susan Eisenhart
Leonard & Else Cobb
Jim & Jan Coleman
Ken & Sharon Coleman
Taylor & Anita Collings
Dr. Ernest &
Mrs. Marjolyne Conrad
Mr. & Mrs. Robert Crandall
Thomas & Kathleen Dahlby
Mike & Shawna Dash
Stephen & Janie Davis
Dr. & Mrs. Robert W. Day
Steve & Kim Day
Deaconess Children's Services
Stella Loichot &
Fabrice J. Demurger
Jeffrey & Colette Deprez
Craig & Whitney DeVine Family
Mike & Laura Dex Wallace
Mark & Stacey Donahue
Pat & Laurel Doody
Patty Carr & Ned Dunn
James Durant
Lori & Rick Eberle
Alex Rule & Kim Edberg
Duane Edwards
Will & Brooke Einstein
Anthony & Amy Elmore
Mike Sylvanus &
Melisa Evangelos
7th Inning Stretch DBA
Everett AquaSox
Terry & Tammy Fahlstrom
Danny & Lori Feig-Sandoval
James & Krista Ferguson
Denise Fetsch
Dave & Jill Follett
Bobby & Edith Forch
Bharat Shyam & Sarah Ford
Jennifer Fournier
Anne & Jon Fox
Susan & Allen Funk
Larry Garcia
Jaymi Garvett

Yuriko Gerrity
Susan Gertz
Heather Giacometto
Dave Cutler & Debbie Girdler
Michael & Lisa Gluck
Patrice Godefroid
Phil Good
Sam & Elizabeth Graham
Dan Halos
Christine & Henry Happel
Marie Harris
James Harris
Jane Harrison
Merritt Hess
Emily & Mike Hoffman
Nina Abelman & Jim Holbery
Hopesparks
Mike & Kristi Houle
Robert A. & Vanessa Howie
Gretchen Hull
William John Huntley
Cindy, David & Matthew Ige
Jerry Jacobs
Daniel & Elaine Johnson
Eddie & Heather Johnson
Kevin Johnson
Carl & Denise Jonasson
Mr. & Mrs. Ann Marie &
Chris Jostol
Tetsuden & Kanako Kashima
Lisa & Mike Kelley
Ken Leingang Excavating, Inc.
Frank & Patricia Kerr
Steven J. Kessler
Carol Kilgore
Hannah Kimball
Kinderling Center
John & Anne Kinsella
David Kirker
Stan & Sharon Kohls
Jeff Koontz
Janis Avery & Mary Kubrich
Roger Layman
John & Kelly Lemoine
Jayne Lindley
Dianne & Stephen Loeb
Bill & Andrea Lokey
Mike & Marie-Christine Longo
Lia Mancuso
Darlene Mangione
Mary Bridge Children's Hospital
& Health Center
Rebecca Graham &
Michael Maxwell
Marcie Maxwell
Douglas Maxwell
Ken & Patty McBride
Ted & Jan McCaugherly
Richard Szeliski & Lyn McCoy
Mr. & Mrs. James G. McCurdy
Dennis Melton
Patti & Steve Merwick
Lee & Julie Monson
Ryan & Stanley Mork
Melissa Mouw
Laura Rose & Hal Mullis
Mr. & Mrs. Mark Murray
Barbi & Wil Nelp
Mrs. Phyllis Nelson
Riene Niemczek
Gwen & Russ Nomi
Chuck Nordhoff
Virginia & Joseph O'Brien
Karen & Daniel Oie
Paula Zook & Richard Olson
David & Jo Orbits

Michael Page
Jaret Palmer
HS Parker
Thomas & Michelle Parsons
Ann Bradford &
Geoffrey Patterson
Greg & Lael Paul
Mark Peattie
Rob & Margaret Philbrick
Plane Jane
Janet & Chuck Pliske
Bruce Lavine & Marjolijn Plomp
Arthur & Helen Poli
Sherman & Deborah Portzer
Gail & Larry Ransom
Kimberly & Richard Rawson
Dr. Thomas Reardon
Patrick J. Repetowski
Kristin & Peter Resca
Tony Richardson
John & Jean Rolfe
Scott Petermeier & Leslie Ross
SCI Infrastructure, LLC
Tim & Kimberly Searing
Joseph & Noelle Sheehy
Shorline Construction Co.
Silpada Jewelry
Jodi Slavik
Pamela & David Smith
Brett & Teresa Smith
Jeffrey & Joanne Snover
Kurtis Snow
Michael L. Snyder
Tim & Carolyn Snyder
Solid Ground
Jean Carter & Jerry Sparrow
Hobie & JoAnn Stebbins
Larry & Lauren Steinberg
Kristen & Michael Stewart
Mary Summers
T. Yorozu Gardening Co. Inc.
Mr. Deborah Kerdeman &
David Tarshes
Mike & Jude Tembreull
Sema Calvo & Emily Thayer
Jim Theofelis
Treehouse
Andrew Chen & Patty Tsao
Andrew H. Tsao
Eric & Karen Ullery
Heidi Vanderlaan
Craig Vinet
Anne & Wayne Wager
Mark & Karen Warner
Tracy Warner
Wade & Ann Webster
Roxanne & David Wiley
James F. Williams
Lydia Williams
Barry Boone & Mary Wilson
Paul Mauren & Jane Winter
David Wold
Woodhouse Family Cellars
LaVerne Woods
YouthCare

\$1-\$99

Anonymous (23)
Sarah & Eric Aasheim
Adobe Systems Incorp.
Jennifer & Ty Alexander
Dean & Gigi Altaras
Mary Jane & Gilbert Anderson
James & Carol Anderson
Sandy Arnold

Dave Freeman & Nicole Ashford
Daniel Sadler & Deborah Ashin
Atlantic Street Center
Michael Bamford
Decky Fiedler & Roland Barach
Bob Baskerville
Dr. & Mrs. James Baugh
Biddappa Berera
Dottie Billington
Nina & Stephen Birnbaum
Kathy & Sergei Bischak
Bonner Brothers
Construction Inc.
Phil & Sherry Bradshaw
Stephen & Robin Bricker
William H. & Meg Crain
Bromfield
Peggy Buerhaus
David & Sandi Bush
John Butler
Joey Carranza
Michael Parisen &
Debra Charles
Janiece & Michael Colon
Richard & Ann Berner Counsell
Donald Crowe
Don Culanag
Wendy Dalrymple
Jeff Daly
Kay & Vernon Dasch
Carolyn Decaires
Katharine Fitzgerald &
Marc DeLaunay
Richard & Kathie Divers
Matthew & Elizabeth Downs
Vicky & Rick Duchaine
Charles & Judith Durbin
Ethan Durden
Susan Evans
Jerry Fairfull
Juli Farris
James & Jana Ficker
Becky & Jack Fix
Fletcher Lokey & Susan Dymont
Janice Fong
Pat & Helen Fox
Laura & Tony Galbato
Julie Gallagher
Jim Gallagher
Brian Gaudreau
Linda & Scott Gettman
Mark Gibson
Mark R. Giles
Harold Gold
Dan & Corinne Green
David J. Greenspan
Mr. & Mrs. Sherry &
Robert Grenley
Monica Grenwick
Gary & Michele Grosenick
Paul Gross
Grundfos CBS, Inc.
Frances & Richard Gustav
Victoria & Larry Hagen
Kevin & Sherryl Haig
Samuel & Mary Alice Hall
Douglas Hanafin
Lawrence & Hylton Hard
Doug Hays
Timothy & Tammy Heary
Greg Hempstead
Rich & Erica Hermsen
Roger B. Hieb
Eve Higgs
Gregory Hixson
Gregor Hodgson

Jack Hsue
Ted & Cheri Huber
Mike Hutchings
Sherrie Ilg
Incentives by Design
Michael & Jenny Jackman
Jessica Jackson
Kate & Mike Jacobson
Bob Jaffe
JC Mueller LLC
Brent Johnson
Jeremy Johnson
Wes & Judy Jorgenson
Laura Kastner PhD
Gerald Keleher
Tanya Keller
William & Debra Keppler
Dan Kettman
Shane & Dana Kim
David & Thea Kleiber
Abraham & Elaine Kleiman
Jill Klein
Janet Klemperer-Broudy
Tom Koch-Weser
Tori Komenda
John Korzenko
Toni Kotschwar
Joan Kramer
Ms. Sandy Kubishta
Margaret & Paul Kuklinski
James Rogers, III &
Pamela Kulin
Leif Larsen
Bruce Larson
Brian & Marianne Lewis
Laila & Ole Lie
Ronald & Susan Lismore
Nancy Locke
William Loeber
Dennis & Tamera Longstaff
Joe Reimer & Kelly Lynch
Daniel & Lindsay MacDougall
Drew & Sherine MacLean
Bryan & Becky Maruhashi
John McAdam
Pat & Helen Fox
Craig McCoy
Julie Gallagher
Brent & Karen McCullough
Terry Ann & Thomas McEachern
Colleen McMonagle
Jean Packo Medina
Eric & Judi Mildeberger
Mr. Dennis Miller
Dr. John & Ms. Laura Moore
Janice & Michael Morgan
Tim Moriarty
Joe & Teresa Morrow
Dr. Norman Moss
Thomas & Debi Myers
Gary Nelson &
Mary Brittain Nelson
Maren Nelson
Chad Nelson
Nancy & Brian Nelson
Cori Nickerson
Bob & Francie Nightingale
Todd & Cinda Norton
Jill Novik
Larry Numata
Steve Numata
NW Geosynthetics, Inc.
Jeffrey & Lisa Ockerman
John Olerud
Dallas Otter
Moss & Peg Patashnik
Steve & Lori Patnode

Julie & Patrick Paulich
John Neeleman &
Gwendolyn Payton
Caroline Peattie
Susan & Bo Peck
Nat & Poo Penrose
Jill Perry
Joseph Harbour &
Cheri Perry-Harbour
Curtis & Lisa Petersen
Tyrall Petersen
Matt Garrett & Darcia Petroff
Marna & Ed Pettigrew
Michael Piraino
Suzanne M. Pletcher
David Power
Queen Anne Evangelical
Lutheran Church Women's
Organization
Colleen Montgomery Rebar
Christina Reese
Andrew Reinland
Mark & Monica Robbins
Carol Rockhill
Douglas Rogers
Melissa Rohwedder
Betsy & Marshall Rose
John Goldman & Andrea Rose
Susie Rosenstein
Annie & Dale Roth
Kristi Nilson & Pat Sanford
Rajiv Sarathy
Gary & Dee Schaefer
Mark & Emma Schoening
Sue Schuler
John Schumacher
Bob & Gayle Seda
Septic Designs
Jen & Tim Sexton
Karen & Mark Shaffer
John & Anne Shea
David & Maria Shiflet
Mike & Theresa Skagen
John Smith
Skyler Smith
Alan Smith
Madelyn & Robert Smith
Douglas Solis
Lauren Stephen
Josef & Deborah Sulc
Bruce R. Sundseth
Dan & Joan Sweeney
Lisa Swenson
Frank & Cassie Tabery
Cheryl Terry
The Mockingbird Society
Brian Thompson
Matthew Corwin & Erin Thornton
Julie & Brad Tupper
Lance Vanetta
Michael Vernon
Chris Visser
Vincent & Marla Volpe
Stacey Walters
Allan & Sally Walton
Brian Ward
White Linen Catering
Steve & Arleen Winslow
Daniel & Judith Witmer
Michael & Vicki Wittenberger
Mark & Penny Wolsky
Wonderland Developmental
Center
Bruce & Kim York

Recognitions

In Memory of Alice Peattie
Julie Goldman

In Memory of Irving Stanislaw
*Katharine Fitzgerald &
Marc DeLaunay
Ray Heacox &
Cynthia Huffman
Mary & Peter Kerr
Janet Klemperer-Broudy
Mr. & Mrs. James G. McCurdy
David E. & Linda Wyman*

In Memory of Carl H. Williams
Steve & Kim Day

In Honor of Stanley
Christopher Red
*Janice & Dave Alford
Hugh & Nicole Chang
Mr. & Mrs. Scot Cocanour
Laura & Tony Galbato
Rich & Erica Hermsen
Lisa & Mike Kelley
Margaret & Paul Kuklinski
Ted & Pam Kummert
Patti & Steve Merwick
Johanna & Tom
Padilla
Promium Joseph &
Midori Sacotte
Mark & Emma Schoening
Julie Kay Sheldon
Cheryl Terry*

In Honor of Portent
Interactive's Clients
Dawn Dort & Ian Lurie

In Honor of Charles &
Tracy Billington
John & Bess Billington

In Honor of Thomas Arkle Clark
James Durant

In Honor of Marc & Beth Droppert
*Gary Blackbourn
Code Blue Communications, Inc.
Mike & Linda Grady*

In Honor of The Bill & Melinda
Gates Foundation
Williams Trading, LLC

In Honor of Gael Owen
Jeff Koontz

In Honor of Valerie Robinson
Moss & Peg Patashnik

In Honor of Lindsay Eberts
Riene Niemczek

In Honor of Mary Ketcham Kerr
Paul & Barbara Pearson

In Honor of Paul Cavanaugh &
Giddens Foundation
The Seattle Foundation

In Honor of Gerry Kunkel
Pat & Helen Fox

In Honor of Janet Mead
Mr. & Mrs. Stuart Newmark

In Honor of Paul Mealy
Greg Hempstead

In Honor of Mary Nelp
Susan & Bo Peck

In Honor of Janet &
Chuck Pliske
Anonymous

In Honor of Kathy Robertson
Anonymous

In Honor of Patricia Lee &
John Smith
Denise & Al Hurley

In Honor of Susan &
Chris Valauri
*James Rogers III &
Pamela Kulin*

Matching Organizations

*The following organizations &
programs have increased the
impact of their employees'
donations with matching gifts:*

Adobe Systems Incorporated
Amgen Foundation
AON Foundation
Axa Foundation
Bank of America Matching Gifts
Carillon Point Account
Great West Insurance Company
Merck Partnership for Giving
Microsoft Matching Gifts Program
REI

Auction Donors

*The following individuals &
businesses donated items to
our clients & live auctions:*

Alaska Airlines
Dean & Gigi Altaras
Anthony's Restaurants
Arena Sports
Janis Avery
Hall Baetz
Tom Ball
Barolo Ristorante
Bayview Limousine Service
Bevan Bellevue Jewelers
Charles Billington
Judy Bloom
Diane Bowlin
Brian Carter Cellars LLC
Michael Bride
Bridle Trails Family Dentistry
Brix Wine Café
Chris Browne &
Stephanie Mulvey
Caryn Buck & Andy Thomas
Cheryl Buck & Susie Miller
Lora Bunch
Butler Valet
Cactus Restaurants
Laura & Shawn Cantrell
Teresa Carew/On Safari Foods

Ilyanne Cauchy
CBS Entertainment
Judy Chase & Chris Cocklin-Ray
Chateau Ste. Michelle
Cicchetti Kitchen & Bar
Mahlon Clements &
Kym Michela
Rennie & Alison Coit
Colleges That Change Lives
Collegiate Choice
June Cook
Coupe Rokei Salon
Custom College
Connection, LLC
Dacels Jewelers
Dahlia Lounge
Dahlia Spa
Dante's Inferno Dogs
Jim & Paula Deboo
Definitive Audio
Delphine McCracken
Photography
Yenii & John Dex
DigiPen Institute of Technology
Dimitriou's Jazz Alley
Ethan Durden
E.B. Foote Winery
Earl's Lincoln Square Restaurant
emmer & rye
Entertainment Weekly
Fall City Inn
Denise Fetsch
Fidelitas Wines
Fleishmann Office Interiors
Fletcher Bay Winery
Flying Fish
Robert Fries & Debra Dahlen
FX McRory's
Garco Industries
Gerber Collision & Glass
GolfTEC
Alicia & Adam Gold
Cynthia Goodwin
Irfan & Shelina Gowani
Graham Graham & Jon Alberts
Holly Gray
Lissa, John & Michael Griffith
Walt Grosjean
Scott Gunning
Guy Carpenter & Co. LLC
Harpo Productions
Katy Kinney Harris
Christopher Helm
Janyce Hilgers
Hillcrest Training
Holiday Inn Express Hotel
& Suites-Pullman
Tula Cahoon Holmes
John Howie/Seastar
Restaurant & Raw Bar
Il Terrazzo Carmine
Intiman Theater
Issaquah Cedar & Lumber
J. Lewis Jewelry
JM Cellars
William & Marlene Jenkins
Brent & Catherine Johnson
Lynette Huffman Johnson
Ellena Jones & &rea Wilhite
Kip Jones
Stephanie Kallos
Becky Kaufman
Key Bank
Kids Central Kitchen
Kimpton Hotels & Restaurants
Andrew & Erin Kitchell

Lisa Kjaer-Schade &
Scott Schade
Bill Krueger
Christiane Laakmann
Chris Larson & Julia Calhoun
Le Gourmand
Leonardo e Roberto's
Gourmet Blends
Ann Lokey & Mark Clausen
Lowe's
Salli Lucker
Lucky Strike Entertainment
Lulu Jewelry
Marco Two Union Square
Mark Ryan Winery
McCormick's Fish House & Bar
Joe McDonnal & Virginia Wyman
Mennenga Technology
Partners LLC
Mercer Island Yoga
Megan Meyers
Mike & Patti Meyers
Michael Rosenberg
Photography
Judi Mildeberger
Tom Miller & Terri Olson Miller
Mode Organic Salon
Lee & Julie Monson
Ken & Becca Moss
Lori & Jim Mueller
Jeff Nelson
Mary & Tim Nelson
Monica Nelson
NetSuite
Nike, Inc.
Kristi Nilson
Nintendo of America, Inc.
Nordstrom
Dan & Amy Nordstrom
Northwest Aerials,
Gymnastics & Dance
Northwest Face
Northwest Railway Museum
Northwest School of
Animal Massage
Northwest Totem Cellars
David & Patty O'Kelley
Olson's Tack Shop
Pacific Topsoils
Parkside Stables
Parties That Cook
David Peattie
Peggy Washburn Photography
Scott & Heidi Peiper
Period Corsets
Pilates Seattle International
Place Pigalle Restaurant & Bar
Plane Jane, Inc.
John & Christine Poli
Ponti Seafood Grill
Michelle Raymond & Bob Power
Joseph Reimer
Reininger Winery
Restful Insomnia
Pamela Rhodes
River Song
Valerie & David Robinson
Helen Rockey & Lisa Gunning/
WildBleu
Scot Rogers & Cody Jacobsen
Rouxbe Online Cooking School
Sammamish Carpet Cleaning
Kristiann Schoening
Schwartz Brothers Restaurants
Seattle Mariners
Seattle Opera

Seattle Seahawks
 Seattle Sounders FC
 Seattle University Department of Athletics
 Judith Sentz
 Serafina
 SEVEN Salon
 Sheraton Seattle Hotel
 John Siegel
 Simplicity Lifestyle Management
 K. Alan Smith
 Patricia Lee & John Smith
 So Much Yarn
 Sorella Salon & Spa
 Soulful Life Professional Coaching, LLC
 Soundspeed Scooters
 Marcie Spahi
 Starbucks Coffee Company
 Kevin & Tina Steiner
 Stephanie's Premium Bakery
 Sugar Mountain
 Sullivan Golf & Travel
 Sun Mountain Lodge
 John Sundstrom
 Leslie Sylvetsky
 Talking Rain
 James Taylor
 Kate Tesch
 The 5th Avenue Theatre
 The Capital Grille
 The Coats
 The Daily Show
 The Kingfish Cafe
 The Shops at The Bravern
 The Westin Bellevue
 The Westin Mission Hills Resort & Spa
 Tom Douglas Restaurants
 TPC Snoqualmie Ridge
 Treehouse Point
 Barbara & Andrew Turner
 Urbanity
 Sara Valente
 Vulcan Real Estate
 W Chicago Lakeshore
 W Seattle Hotel
 Walter Walcher/Tosoni's
 Cindy Walker
 Ronna Sarvas Weltman
 Leslie West
 Whidbey Retreats
 Mark Whitmore
 Wild Ginger
 David & Kathryn Williams
 Wine Styles - Issaquah
 Wink Eyewear
 Woodhouse Family Cellars
 Woodman Lodge
 Paul & Susie Wyckoff
 Jack Yager
 Yogavana
 Youth in Focus
 Tori & Eric Zwisler

Lissa Leff Griffith
 Leah Idler
 Jane Davis Consulting
 Amy Knapp
 Labels West Inc
 Matthew & Barbara LePage
 Patti & Mike Meyers
 Bob Morgan and Washington Graphics
 Tim & Mary Fellows Nelson
 Zachary Orts
 Debra Charles Parsinen and Chase Florists
 David & Valerie Robinson
 Elaine Schmidt
 Katie Griffith, Bryan Sevenser and Madison Willis
 Spicers Paper
 Gina Tolentino
 Turnstyle
 Kelly Willis

Endowment Donors

Thank you to the newest contributors to our Endowment Fund, for their generous donations in the last year:

Paul & Barbara Pearson
 Andrew & Barbara Turner
 The Estate of Mrs. Violet Turner

The following individuals have made contributions to the Mary Ketcham Kerr Endowment Fund since its inception:

Anonymous (2)
 Cory Carlson & Rhoda Altom
 Hall & Dorothy Baetz
 Roger Bass
 Carolyn Corvi & John Bates
 Beth Billington
 Matt & Judy Bloom
 Bottler Charitable Trust
 Steve & Linda Brown
 Mark & Lisa Caputo
 Hugh & Nicole Chang
 Jeff & Janeé Christianson
 Ann Lokey & Mark Clausen
 Joel & Diane Cowger
 Stephen Romein & Ty Cramer
 Deborah B. Cushing
 Yenii & John Dex
 Julie & Robert Dreyfoos
 Beth & Marc Droppert
 Alden M. Garrett & Charlie C. Eriksen
 Sally Ketcham & Alyx Fier
 Savitha & Scott Finch
 Bobby & Edith Forch
 Anne & Jon Fox
 Alicia & Adam Gold
 Christine Lamson & Patrick Gordon
 Michelle & Glenn Halstead
 Christine & Henry Happel
 Christopher & Victoria Peattie Helm
 Doxie Hogue
 Albert & Karen Hogue
 James & Marilyn Hogue
 Lawrence Hogue
 Robert Homchick
 Charles & Catherine Huffman

In-kind donors

The following individuals made in-kind gifts of time, talent and treasure to NW Children's Fund in the past year:

4-Mile Production
 Peter Barnes and Clatter & Din
 Kerry Carty
 Flying Spot Entertainment

William & Marlene Jenkins
 Daniel & Elaine Johnson
 Betty Jones PhD
 Dave & Deborah Jones
 Erik & Julie Jorgensen
 Judith Wright Design
 Mary & Peter Kerr
 Frank & Patricia Kerr
 Jeanie Ketcham
 Mrs. Henry H. Ketcham
 Terri & Doug Kimball
 Wiley & Marianne Kitchell
 Don & Carla Lewis
 Brian & Marianne Lewis
 Rob & Gina Maguire
 Alisa Martinez
 Scott & Shelley McIntyre
 Andrew & Valerie Meyers
 Patti & Mike Meyers
 Stanley & Betsy Minor
 James & Lori Leff Mueller
 Heidi Stamm & Thomas Mueller
 Todd & Mary Nelp
 Mary & Tim Nelson
 Brian & Cindy Nelson
 Chuck Nordhoff
 Mark & Leslie Olson
 Dick & Patsy Pattison
 Paul & Barbara Pearson
 Scott & Heidi Peiper
 Monica Butler & M. Peter Phillips
 Howard Phillips
 Sasha & Lowell Press
 Mala & Suri Raman
 David & Valerie Robinson
 Scot & Cody Rogers
 Jan & Walter Rotkis
 Kristi Nilson & Pat Sanford
 Bob Sawin
 Lisa Kjaer-Schade & Scott Schade
 Seattle Foundation
 Judith & Bob Sentz
 Roger & Cari Shanafelt
 Dave & Liz Silke
 Patricia Lee & John Smith
 Chelsea Stanton
 Kevin & Tina Steiner
 Bob & Katie Strong
 The Seattle Foundation
 Caryn Buck & Andy Thomas
 Sue Reichert & Robert Thomas
 Andrew & Barbara Turner
 John & Marka Jenkins Waechter
 Carol & Jess Webster
 Kathryn & David Williams
 Mrs. Virginia Bloedel Wright
 Paul & Susie Wyckoff
 WYCO Fund
 Christine Yokan

We have made every effort to accurately include all donors. We apologize for any inadvertently omitted or incorrectly displayed names. Please do not hesitate to contact us with changes.

Barbara Turner, honored by a legacy gift to NW Children's Fund
 Photo Courtesy Dan Johnson



NW Children's Fund Endowment receives First Legacy Gift

When Violet Turner passed away at the end of March, she honored her daughter-in-law Barbara in a very special way. She made NW Children's Fund the beneficiary of a \$48,500 annuity. Barbara Turner, a long-time board member, was touched. "Vi thought the way NW Children's Fund distributes funds was very smart."

"It was important to Vi that the work we undertake on behalf of abused and neglected children continue. That's why she felt the endowment was the right choice for her bequest," Turner said.

Have you included Northwest Children's Fund in your will or estate plan? A legacy gift allows us to keep making a difference in the lives of our community's children on your behalf. To learn more, contact Victoria Helm, Executive Director, at 206.682.8447 or vhelm@nwcf.org.

The Annual Golf Classic: another important score for NW Children's Fund



Thanks to the wonderful support of our sponsors and all who attended, this year's event was a raging success. Because of your tremendous generosity, we raised nearly \$54,000 for NW Children's Fund.

A great big shout-out to our host, Bill Krueger. His enthusiastic support of this event is pivotal to our success.

From left Jeff Christianson / Golf Classic Chair; Bill Krueger / Golf Classic Host; Victoria Helm / Executive Director, NW Children's Fund; Julian Eames / SVP of Business Operations at presenting sponsor F5 Networks, Inc.

Photo Courtesy Wenona S. Strafford

25th Anniversary Gala: oh what a night!

NW Children's Fund's Silver Anniversary Gala was the most successful celebration in its 25-year history. Funds raised that night made it possible to surpass the \$10 million mark for grants invested in vulnerable children over the past quarter century.

This support is a vivid illustration of our community's passion for carrying on NW Children's Fund's important work in the future. We are deeply grateful for your commitment and investment!

Guests were inspired by the words of Diane Jordan, our courageous young speaker from YouthCare, who told the crowd, "Thank you for 'having the back' of NW Children's Fund and kids like me."



Diane Jordan
 Photo Courtesy Team Photogenic